

MINISTRY OF SANITATION AND WATER RESOURCES

COMMUNITY WATER AND SANITATION AGENCY

2023

ANNUAL REPORT

CWSA HEAD OFFICE
P.M.B, K.I.A, ACCRA, GHANA

GULF STREET, SHIASHIE
GPS: GA-238-0320
+233 302 983104 / 906028
info@cwsa.gov.gh
www.cwsa.gov.gh



Prepared, Designed and Published by CWSA, Accra - Ghana

TABLE OF CONTENTS

Table of Contents.....	I
List of Tables	III
List of Figures	IV
List Of Acronyms	V
Foreword.....	VI
Executive Summary	VII
1. Introduction.....	1
1.1 Establishment and Mandate of Cwsa.....	1
1.2 Organizational Setup	1
1.3 Mission	3
1.4 Vision	3
1.5 Core Values	3
1.6 Strategic Objectives for 2023	3
2. Performance of Key Indicators for 2023	4
2.1 Financial/Economic Indicators	4
2.2 Efficiency/Productivity Indicators.....	5
2.2.1 Water System Management.....	5
2.3 Dynamic Effects Indicators	6
2.4 Governance and Management Improvement Indicators	6
2.5. Projects Implementation Indicators	8
2.6 Status of the Community Water and Sanitation Policy Reform	9
2.7 Summary of Income and Expenditure Statements.....	9
3. WASH Interventions and Water Coverage.....	10

3.1 Status of Ongoing Wash Projects	10
3.2. Rehabilitation and Expansion of Water Systems Under Cwsa Management	13
3.3 Water Safety Interventions	20
3.4 Community Safe Water Coverage	21
3.4.1 National Community Safe Water Coverage	21
3.4.2 Regional Comparative Analysis of Safe Water Coverages	22
3.4.3 Trends in Community Safe Water Coverage.....	23
4. General Administration and Human Resource	24
4.1 Composition of Cwsa Board and Management	24
4.2 Major Activities of Cwsa Board and Management.....	25
4.3 Staffing	25
4.4 Relevant Personnel Issues.....	26
5. Challenges And Mitigations	27
5.1 High Non-Revenue Water	27
5.2 Water Safety Issues	27
5.3 Inadequate Sources for Pipe Water Systems	27
5.4 Erratic Power Supply from the National Grid and Frequent Disconnections	28
5.5 Halt of the Implementation of Water Supply Project Contracts	28
6. Recommendations	29
7. Future Direction of Cwsa	30
7.1 Key Objectives for 2024.....	30
7.2 Projected Income and Expenditure for 2024	30
8. Conclusion	31
Appendix 1: 2023 Performance of Monitoring Indicators and Targets	32
Appendix 2: National Community Safe Water Coverage Statistics	35

LIST OF TABLES

Table 2.1: Performance in Financial/Economic Indicators.....	4
Table 2.2: Performance in Efficiency/Productivity Indicators	5
Table 2.3: Performance in Dynamic Effects Indicators.....	6
Table 2.4: Performance in Governance and Management Improvement Indicators	7
Table 2.5: Achievement of Project Implementation in the Year	8
Table 2.6: Summary of Income and Expenditure for 2023	9
Table 3.1: Status of Ongoing WASH Projects.....	11
Table 3.2: Rehabilitation and Expansion Works on Water Systems Under CWSA Management	14
Table 3.3: Water Safety Interventions	20
Table 3.4: 2023 Community Safe Water Coverage by Regions.....	22
Table 4.1: CWSA Head Office and Regional Directors	24
Table 4.2: Staff Numbers and Vacancies at the Head Office and Regional Levels	25
Table 4.3: Staff Numbers and Vacancies at the Water System Level	25
Table 4.4: Key Personnel Issues	26
Table 7.1: Projected Income and Expenditure for 2024	30

LIST OF FIGURES

Figure 1.1: CWSA Organizational Structure	2
Figure 3.1: National Community Safe Water Coverage in 2023	21
Figure 3.2: National Community Safe Water Coverage in 2023	20

LIST OF ACRONYMS

CAPEX	Capital Expenditure
COVID-19	Coronavirus Disease 2019
CWSA	Community Water and Sanitation Agency
DSDP	Debt Swap Development Programme
GoG	Government of Ghana
GWL	Ghana Water Limited
GWSC	Ghana Water and Sewerage Corporation
KVIP	Kumasi Ventilated Improved Pit
NPA	National Petroleum Authority
PPE	Personal Protective Equipment
RCSTWSP	Rural Communities and Small Towns Water Supply Project
R-WUP	Rural Water Utilitization Project
SDG	Sustainable Development Goal
SIGA	State Interests and Governance Authority
SIP	Strategic Investment Plan
UNICEF	United Nations Children’s Fund
WASH	Water, Sanitation and Hygiene
WSIP	Water Supply Improvement Project
WSMS	Water System Management Staff

FOREWORD

This report outlines the major activities and deliverables of Community Water and Sanitation Agency (CWSA), working in partnership with Water, Sanitation and Hygiene (WASH) Sector players in 2023, towards ensuring *'availability and sustainable management of water and sanitation for all'*.



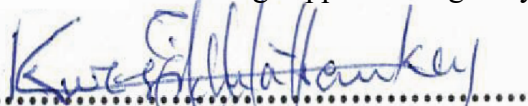
CWSA was established by the Community Water and Sanitation Agency Act, 1998 (Act 564) to facilitate the provision of safe water and related sanitation services to rural communities and small towns in Ghana. In 2019, Cabinet gave policy approval for the National Community Water and Sanitation Policy Reform which has expanded CWSA's mandate to include the management of Pipe Water Systems. Implementation of the policy reform is progressing smoothly as the Agency currently manages 192 pipe water systems in 150 districts across the 16 regions of Ghana.

Through the unwavering commitment and support of the Government of Ghana, CWSA invested substantially in the rehabilitation, redesign, and reconstruction of pipe water systems in some major towns as part of the Agency's consistent efforts to deliver sustainable safe water and related sanitation services to all rural communities, towns and peri-urban areas in Ghana. We are very grateful to our Sector Ministry and the Ministry of Finance for making these projects materialize.

Projects implemented by the Agency as part of efforts to increase water access in rural communities, towns and peri-urban areas included the Water Supply Improvement Project (WSIP) of the Ghana-Spain Debt Swap Development Programme (DSDP), Rural Water Utilization Project (R-WUP), UNICEF-Assisted WASH projects, Plan International Ghana Integrated Package for Sustainable Development (IPADEV) Project and Ghana Red Cross WASH Project.

Despite these successes, additional investments are still needed for the rehabilitation/reconstruction of several broken-down pipe water systems, the installation of new water infrastructure to provide safe drinking water to an estimated 8.9 million people, the purchase and installation of packaged water treatment plants aimed at improving drinking water quality, and the installation of dedicated transformers and automatic voltage regulators. This would strengthen government efforts in combating WASH-related diseases in Ghanaian communities and improve Ghana's realization of attaining the targets for the Global Sustainable Development Goal (SDG) 6.

On behalf of the CWSA Governing Board, I would like to express my sincere gratitude to the organization's management and staff, as well as to our stakeholders and other actors in the sector, for their outstanding support during the year.

A handwritten signature in blue ink that reads "Kwesi Eduafo Yankey". The signature is written in a cursive style and is positioned above a dotted line.

MR. KWESI EDUAFO YANKEY
CHAIRMAN, CWSA GOVERNING BOARD

EXECUTIVE SUMMARY

The Community Water and Sanitation Agency (CWSA) was established by the Community Water and Sanitation Agency Act, 1998 (Act 564) to facilitate the provision of safe water and related sanitation services to rural communities and small towns in Ghana. In October 2019, Cabinet gave policy approval for the National Community Water and Sanitation Policy Reform which has expanded CWSA's mandate to include the management of pipe water systems. This report outlines the key activities and deliverables of CWSA in the year 2023 in fulfilment of its mandate and in contribution towards the Sustainable Development Goal (SDG) 6 which is to ensure the '*availability and sustainable management of water and sanitation for all*'. Highlights of the report are as follows.

A. Performance of Financial/Economic Indicators

The Target for revenue from sale of water was exceeded (119.22%) whereas the indicator on 2% rural water levy recorded 96.27% achievement. More than half (73.52%) of the target for Government Subvention (Compensation, Goods & Services & Assets) was achieved while donor inflow made a marginal achievement of 10.19%. Total income realized was GHS140,036,371.00 which is a little over half (56.33%) of the annual target of GHS248,595,471.22 while total expenditure was GHS258,507,274.00 which exceeded (104.51%) the annual target of GHS247,344,319.18.

B. Performance of Efficiency/Productivity Indicators

Total water production stood at 9,974,030.44m³, exceeding the annual target of 8,569,722.92m³ (116.39%) while the non-revenue water record was 39.39%, deviating from the annual target (30%) by 23.84%. Payment rates for domestic and institutional subscribers exceeded the targets of 80% and 70% by achieving 85.64% and 73.15% respectively while payment rates for commercial subscribers fell to 71.29% compared to the annual target of 80%.

C. Status of the Community Water and Sanitation Policy Reform

CWSA managed a total of 192 pipe water systems in 150 districts across the 16 regions of Ghana. A total of 1,375 staff were recruited to manage the pipe water systems. Installation of packaged water treatment plants, reconstruction, rehabilitation, and expansion works were ongoing in some pipe water systems as part of measures to improve safe water supply.

D. Status of Ongoing Projects

I. Rural Water Utilization Project (R-WUP)

The overall project target was the Construction of 2 pipe water systems at Adum Bansa and Wassa Dunkwa. The cumulative achievement in the project shows that the High-level tank has been completed at Wassa Dunkwa, the laying of distribution pipelines at Wassa Dunkwa was 99% complete, the Water system management staff office at Wassa Dunkwa completed awaiting

furnishing, Siting undertaken at Adum Bansa, and Contractor procured for drilling of boreholes at Adum Bansa.

II. Water Supply Improvement Project (WSIP) of the Ghana-Spain Debt Swap Development Programme (DSDP)

The project was expected to deliver a total of 18 pipe water systems and 1 point source to serve. At the end of the 2023 operational year, 12No. pipe water systems were completed and handed over, 1No. Point source completed, 4No. water systems under construction (4No. storage tanks, 5No. pumphouses, 31No. standpipes near completion) under Lot 4, 2No surface water systems under construction (2No.HLTs, pipework, 1No surface WTP and 20No. SPs completed) under Lot 6.

III. Five Districts Water Supply Project (Phase III) (Volta Region)

The project target includes the laying of a 23.3km transmission and 110km distribution pipe network, construction of 1 booster station, and 4 water towers, construction of 163 standpipes, construction of 3 water towers, and construction of 1 booster pumping station. From the project inception to the end of December 2023, the project deliverables consisted of a 33.5km transmission pipe network, 138km distribution pipe network laid, 1No. booster pumping station constructed, 3No. water towers (50m³, 12m high) constructed, 1No. concrete platform (8m high) with 3No. 10m³ polytanks constructed, 113No. standpipes constructed.

IV. Construction of CWSA Volta Regional Office Block (Volta Region)

The project seeks to complete a 2-storey office block, Driver' lounge, External works and fence wall, and Installation of a Solar PV power source. As at the end of 2023, the project is ongoing the current status includes the main building: internal cabling, windows, and burglar proofs installed and skimming completed; Driver's lounge and security post: internal cabling works, windows, and burglarproof completed; and External works: fence wall completed pending painting.

V. Ghana Red Cross Wash Project – WASH in Health Care Facilities and School Phase 2 (Upper East Region)

Key deliverables include drilling of 20No. boreholes fitted with hand pumps, drilling and mechanization of 8No. boreholes in 7No. Health centres and 1No. in a secondary school, construction of 9No. Water closet toilet facilities for 6No. health care facilities, construction of 6No. Limited Mechanized Systems for 6No. health care facilities, construction of 2No. water closet toilet facilities and 2No. Limited mechanized system for 2No. SHS, and construction of 5No. KVIP for 3No. schools and 2No. KVIP for 2No. health care facilities, construction of Limited Mechanized Systems, and water closet toilet facilities for 9No. selected health care facilities, construction of 4No. new incinerator and rehabilitation of 1No. existing incinerator for 5 health care facilities in Kassena Nankana Municipal, Nabdram, Binduri, and Pusiga districts. Even though the project has been stalled currently, 26No. boreholes successfully drilled and 19No. fitted with hand pumps, 6No. boreholes re-developed, 9No. water closet toilet facilities completed and handed

over 7No. limited mechanized system completed and handed over 6No. KVIPs completed and handed over, Preparation of tender documents and drawings for civil works completed for phase 2.

VI. Other WASH Projects

Other projects implemented were the UNICEF-Assisted WASH Project in the Upper West and North East Regions of Ghana as well as the Plan International Ghana Integrated Package for Sustainable Development (IPADEV) for the Oti Region. In the Upper West Region, the UNICEF-Assisted WASH Project covers the Rehabilitation of Hamile-Happa Water System (Redevelopment of 5no boreholes & pumping test, hydraulic head assemblies, power improvement, 1.5km distribution network extensions and construction of 4No. standpipes). The project has been completed and the facility is in use. However, in the Northeast Region, the project is about the Rehabilitation of the Bumbua Zio water system (mechanization of 2No. high-yielding boreholes). Even though site preparation and pumping tests have been conducted, the project is halted.

The Plan International Ghana Integrated Package for Sustainable Development (IPADEV) for the Oti Region has been inspected for handing over so that the facility can be put to use. The project scope included 10No boreholes drilled and pump tested in 10No. communities, Water quality analysis conducted, Handpumps installed on 6No. boreholes, and 4No. boreholes mechanized.

E. Community Safe Water Coverage

Community safe water coverage stood at 61.87% as at the end of December 2023. A total population of 14,842,902 was served with safe water while an estimated population of 9,117,697 was yet to be provided with water.

F. Operational Challenges and Recommendations

The major operational challenges encountered were the increase in non-revenue water, rapid discharge of batteries resulting in the inability of smart taps to dispense water at all times, high Iron, Manganese and Fluoride in some water sources, inadequate source boreholes and low yields affecting water production in some pipe water systems, frequent power outage and voltage fluctuations resulting in persistent damage of electromechanical components of pipe water systems, and the rehabilitation of the Paga and Sirigu water systems under UNICEF has not been completed because the contract has been terminated which has affected water supply. It is therefore recommended that CWSA employs a holistic approach to reduce the high non-revenue water, replace smart taps batteries with more efficient and robust batteries, procure and install packaged water treatment plants to improve water quality in affected water systems, expedite mechanization of already drilled boreholes to augment water production, and install dedicated transformers and automatic voltage regulators, and scale-up the construction of solar farms.

1. INTRODUCTION

The report presents the activities and deliverables of the Community Water and Sanitation Agency in the year 2023. It presents comparative analyses of achievements against targets in Water, Sanitation and Hygiene (WASH) services delivery as contained in the CWSA 2021-2024 Strategic Investment Plan (SIP) and the 2023 performance contract between CWSA signed with the Government of Ghana (GoG). The report also highlights the progress made in the implementation of the National Community Water and Sanitation Policy Reform, status of ongoing WASH projects, and financial statements of the Agency.

1.1 Establishment and Mandate of CWSA

CWSA was established by an Act of Parliament, Act 564, in December 1998. The objective of the Agency is to facilitate the provision of safe water and related sanitation services to rural communities and small towns in Ghana. During its sixty-fourth meeting held on 31st October, 2019, Cabinet gave policy approval for the National Community Water and Sanitation Policy Reform which seeks to expand CWSA's mandate to include the management of pipe water systems.

1.2 Organizational Setup

CWSA is made up of a head office in Accra and regional offices in all sixteen (16) regions of Ghana. The current reform has occasioned the establishment of one hundred and seventy-seven (177) water system management offices across the sixteen (16) regions of Ghana. As more pipe water systems are handed over by the communities to CWSA, the Agency's structural setup will expand.

At the apex of the CWSA organisational structure is a nine-member Governing Board. The Board is committed to upholding the highest standards of corporate governance and the Agency's obligation to deliver safe water and related sanitation services to rural communities and small towns.

CWSA is headed by a Chief Executive who is responsible for the overall organization and management of the Agency. The Chief Executive is assisted by twenty-one (21) Directors who together constitute management. Five (5) out of the twenty-one (21) directors are positioned at the head office, heading the departments of Planning and Investments, Administration and Human Resources, Engineering Services, Finance, and Legal Affairs. The remaining sixteen (16) Directors head the regional offices of the Agency. The organisational structure of the Agency is depicted in Figure 1.1.

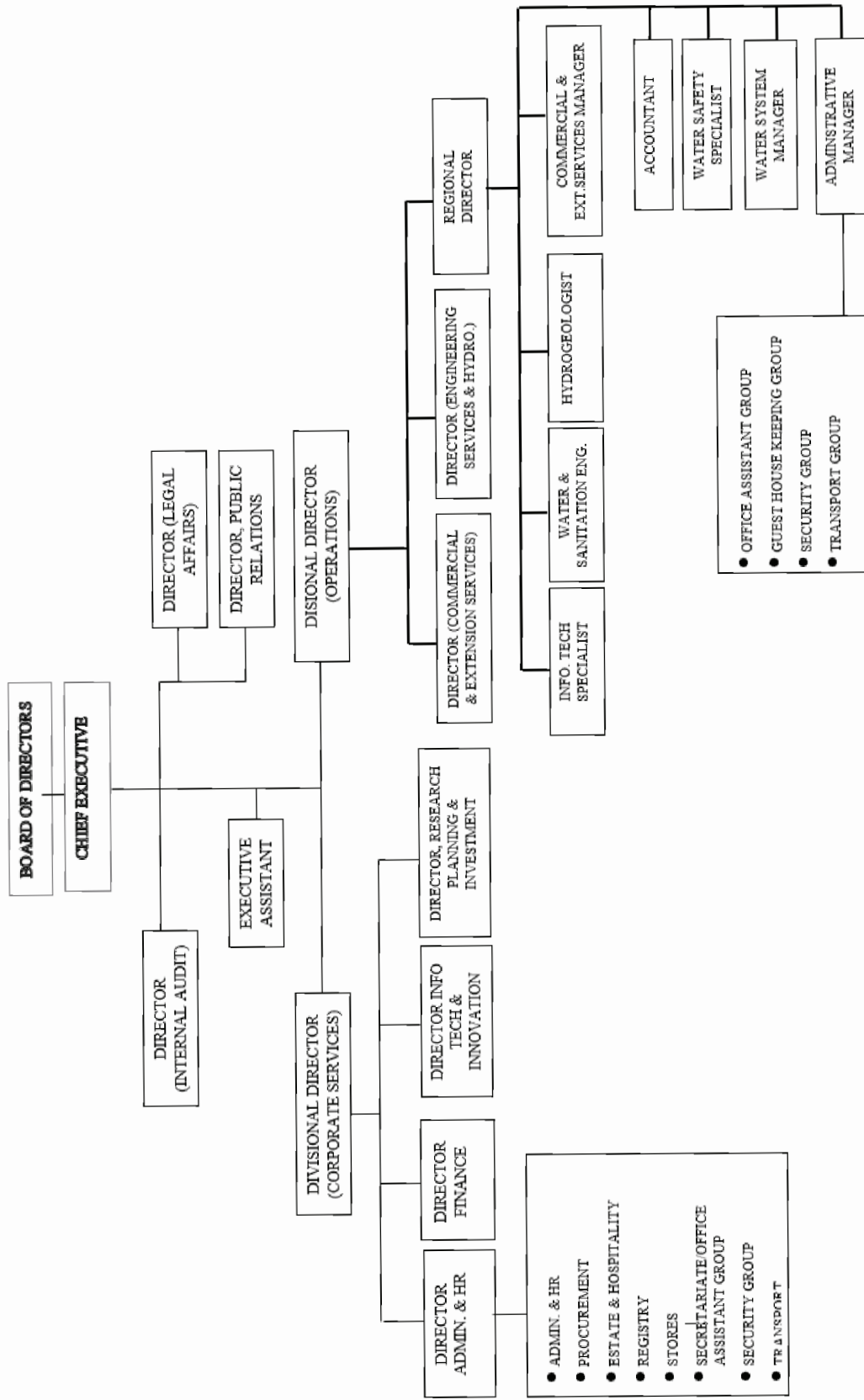


Figure 1.1: CWSA Organizational Structure

1.3 Mission

CWSA is committed to delivery of safe and sustainable water and related sanitation services to communities in Ghana.

1.4 Vision

CWSA aspires to be the leading public sector water service delivery organization in Africa.

1.5 Core Values

The core values of the Agency are as follows.

1. **Integrity:** We act honestly, fairly, and ethically in all our operations and service delivery.
2. **Excellence:** We deliver high-quality works and services, and always strive for sustainable solutions.
3. **Professionalism:** We demonstrate competence and commitment in our operations.
4. **Transparency and Accountability:** We operate in openness and are accountable to our stakeholders.
5. **Innovation:** We strive to be dynamic and innovative with technological trends in the WASH sector.
6. **Customer Satisfaction:** Satisfaction of our clients is our primary concern.

1.6 Strategic Objectives for 2023

The following objectives were pursued as per the CWSA 2021-2024 SIP.

1. Increase water coverage from 61.61% in 2021 to 63% by end of 2023
2. Review the current legal and institutional arrangements for community water services delivery.
3. Restructure CWSA to respond to the Government of Ghana's directive on rural and small towns water supply in an efficient and effective manner to ensure sustainable water delivery.
4. Increase annual revenues from sale of water from GHS35,908,685 in 2021 to GHS49,781,501.91 in 2023
5. Prevent revenue leakages through sound financial risks management.
6. Establish a support mechanism for sustainable management of point water systems by end of 2024
7. Improve access to sanitation and hygiene services in CWSA operational areas.
8. Enhance CWSA's corporate image and visibility.
9. Improve water safety in all pipe water systems through appropriate water safety practices.
10. Improve operational efficiency through technology and innovation.

2. PERFORMANCE OF KEY INDICATORS FOR 2023

The section presents the performance of CWSA in the five (5) main performance areas of the Agency (Financial/Economic, Efficiency and Productivity, Dynamic Effects, Management Improvement/Projects, and Corporate Governance) as per the 2023 performance contract between CWSA and the Government of Ghana.

2.1 Financial/Economic Indicators

The Target for revenue from sale of water was exceeded (119.22%) whereas the indicator on 2% rural water levy recorded 96.27% achievement. More than half (73.52%) of the target for Government Subvention (Compensation, Goods & Services & Assets) was achieved while donor inflow made marginal achievement of 10.19%. Total income was GHS140,036,371.00 which is more than half (56.33%) of the annual target of GHS248,595,471.22 while total expenditure was GHS258,507,274.00 which made up 104.51% of the annual target of GHS247,344,310.18. CWSA exceeded its expected expenditure on compensation and for goods and services by 33.39% and 13.65% respectively while the achievement on CAPEX was 96.75%. Find details in Table 2.1.

Table 2.1: Performance in Financial/Economic Indicators

Performance Criteria	Unit of Measurement	Targets	Achievements	Variance	% Achievements
Government Subvention (Compensation, Goods & Services & Assets)	GHS	71,853,731.31	52,825,731.00	-19,028,000.31	73.52
Internally Generated Funds (IGF) ¹	GHS	51,781,501.91	61,735,039.00	9,953,537.09	119.22
Donor Inflows	GHS	110,158,449.20	11,226,477.00	-98,931,972.20	10.19
2% Rural Water Levy	GHS	14,801,788.80	14,249,124.00	-552,664.80	96.27
Total Revenue	GHS	248,595,471.22	140,036,371.00	-108,559,100.22	56.33
Compensation	GHS	31,125,345.31	41,518,636.00	10,393,290.69	133.39
Goods & Services	GHS	46,173,400.36	52,474,823.00	6,301,422.64	113.65
CAPEX	GHS	170,045,564.51	164,513,815.00	-5,531,749.51	96.75
Total Expenditure	GHS	247,344,310.18	258,507,274.00	11,162,963.82	104.51
Surplus/Deficit	GHS	-	-	-	-
Surplus Payment		171,296,725.55	46,042,912.00	-125,253,813.55	26.88
Total Assets	GHS	523,520,998.00	668,295,176.00	144,774,178.00	127.65
Current Assets	GHS	22,949,446.00	70,444,775.00	47,495,329.00	306.96
Current Liabilities	GHS	5,276,432.00	109,591,413.00	104,314,981.00	2077.00
Total Liabilities	GHS	5,276,432.00	324,551,249.00	319,274,817.00	6150.96
Accumulated Funds	GHS	518,244,566.00	343,743,927.00	-174,500,639.00	66.33
Total Surplus/Deficit	GHS	171,296,725.55	46,042,912.00	-125,253,813.55	26.88
Transaction with Government					
Revenue Capping	GHS	-	-	-	-
Public Service Obligation	GHS	-	-	-	-

¹ Internally Generated Funds is made up of Revenue from Sale of Water and Other Income

2.2 Efficiency/Productivity Indicators

Table 2.2 shows the Agency's performance in Efficiency/Productivity Indicators. Key highlights are as follows.

2.2.1 Water System Management

Total water production stood at 9,974,030.44m³, exceeding the annual target of 8,569,722.92m³ (116.39%) while the non-revenue water record was 39.39%, deviating from the annual target (30%) by 23.84%. Payment rates for domestic and Institutional subscribers exceeded the targets of 80% and 70% by achieving 85.64% and 73.15% respectively while payment rates for commercial subscribers fell to 71.29% compared to the annual target of 80%.

The Staff Cost/Total Revenue stood at 29.65% against the target of 22.69%, Administrative Expenses/Total Revenue was 37.47% against the target of 18.67% while Recurrent Expenditure (OPEX)/IGF was 152.25% against the target of 85.62%. CWSA's total Staff Strength at the end of the year was 1,375 against the target of 1,446. Labour Productivity (Total Revenue / Staff Strength) stood at GHS101,844.63 against the target of GHS 171,054 while Total Revenue/Staff Cost was estimated at 337.29% against the target of 440.75% for the year. Detailed achievements on efficiency/productivity indicators are presented in Table 2.2.

Table 2.2: Performance in Efficiency/Productivity Indicators

Performance Criteria	Unit of Measurement	Target	Achievement	Variance	% Achievement
Operations (Water Systems Management)					
Total Water Production	m ³	8,569,722.92	9,974,030.44	1,404,307.52	116.39
Non-Revenue Water	%	30	39.39	9.39	76.16
Payment Rate for Domestic Subscribers	%	80	85.64	5.64	107.05
Payment Rate for Institutional Subscribers	%	70	73.15	3.15	104.50
Payment Rate for Commercial Subscribers	%	80	71.29	-8.71	89.11
New Connections with Water Meters	No.	5,000	4,638	-362.00	92.76
Resource Utilization					
Net Surplus Margin	%	0	32.88	32.88	-
Staff Cost / Total Revenue	%	22.69	29.65	6.96	130.67
Administrative Expenses / Total Revenue	No.	18.67	37.47	18.80	200.71
Staff Strength as at 31 December 2023	GHS	1,446	1,375	-71.00	95.09
Labour Productivity (Total Revenue / Staff Strength)	%	171,054	101,844.63	-69,209.37	59.54
Total Revenue / Staff Cost	%	440.75	337.29	-103.46	76.53
Recurrent Expenditure (OPEX)/IGF	%	85.62	152.25	66.63	177.82

2.3 Dynamic Effects Indicators

Submission of the 2023 Human Resource Plan, 2023 Maintenance Programme, and the 2023 Safety Management Programme was on time. The implementation of the 2023 Human Resource Plan achieved 55% against the target of 100% whilst the implementation of the 2023 Maintenance Programme for Assets and the 2023 Safety Plan achieved 80% and 60% respectively against the target of 100% each (See Table 2.3).

Table 2.3: Performance in Dynamic Effects Indicators

Performance Criteria	Unit of Measurement	Target	Achievement
Submission of 2023 Human Resource Plan	Month	January, 2023	26th January, 2023
Implementation of 2023 Human Resource Plan	%	100	55
Submission of 2023 Maintenance Programme	Month	January, 2023	26th January, 2023
Implementation of 2023 Maintenance Programme	%	100	80
Submission of 2023 Safety Management Programme	Month	January, 2023	26th January, 2023
Implementation of 2023 Safety Management Programme	%	100	60

2.4 Governance and Management Improvement Indicators

Under the Governance and Management Improvement indicators, Evidence of Board of Directors Meetings (e.g. Meeting Notice, Agenda & Attendance Register, etc.) and Statutory (Audit and Risk) & Other Board Sub-Committees Action Plans and Reports were submitted on time. The Gender Balance at Management Level was 0.17 against the target of 0.35 as at end of the year. However, the Board of Directors Charter and Action Plan, Internal Audit Assessment Reports, Improvement Plans and Monitoring Reports, Environmental/Green Policy/Plan and Reports, the 2022 Board Evaluation and Mid-Term External Assessment Reports, and the Corporate Social Responsibility Policy/Plan were not submitted. Details on the performance of governance and management improvement indicators are presented in Table 2.4.

Table 2.4: Performance in Governance and Management Improvement Indicators

Performance Criteria	Unit of Measurement	Target	Achievement
Governance			
Submission of Board of Directors Charter and Action Plan	Month	January	Not Submitted
Submission of Evidence of Minutes of Board of Directors Meetings (e.g. Meeting Notice, Agenda & Attendance Register, etc.)	Week(s) After Approval	1	1 week (submitted on 31st March 2023 for Board meeting held on 29th March 2023, 26th July 2023 for Board meeting held on 19th July 2023, and 18th December 2023 for Board meeting held on 13th December 2023)
Submission of Statutory (Audit and Risk) & Other Board Sub-Committees Action Plans and Reports	Week(s) After Approval	1	1 week (reports approved during a Board meeting held on 19th July 2023 and submitted on 26th July 2023)
Internal Audit Assessment Reports, Improvement Plans and Monitoring Reports	Week(s) After Approval	1	Not done
Holding of Annual Stakeholders' Meeting	Month	August	Not held
Environmental/Green Policy/Plan and Reports	Month	February	Not Submitted
Gender Balance at Management Level	Ratio	0.35	0.17
Submission of Strategic Plan (3-5yrs)	Month	October	14th December 2023
Submission of 2024 Annual (updated) Corporate Plan	Month	October	14th December 2023
Submission of 2022 Board Evaluation and Mid-Term External Assessment Reports, where applicable	Month	February	Not Submitted
Corporate Social Responsibility Policy/Plan	Month	February	Not Submitted
Compliance			
Submission of filled-out Integrated Specified Entity Database forms (use the attached Database form)	Month	February	Not Submitted
Accuracy and Completeness of filled-out Integrated Specified Entity Database forms	%	100	N/A
Status of Compliance (use the attached compliance questionnaire)	Month	February	Not Submitted
Conformance to SIGA Quarterly Reporting Format	Items	6	To be determined by SIGA
Risks			
Submission of Reports/Action Plans of Functioning Risk Committee	Week(s)	1	Not Submitted
Submission of Risks Log, Management Plan and Implementation Reports	Month	February	Not Submitted
Implementation of Risks Management Plan	%	100	Not Submitted
Initiatives			
Number of buying or selling (inter-trading)	No.	5	10

2.5. Projects Implementation Indicators

Works carried out on the Rehabilitation and Expansion of Sefwi Wiawso Pipe Water System in the Western North Region, Reconstruction of Asankragwa Water System in the Western Region, and Reconstruction of Tumu Water System in the Upper West were at a cumulative progress of 32%, 50% and 50% respectively since projects inception. Works on Papaase and Essiam water system clusters in the Central Region, Bole Water System in the Savannah Region and Adidome Water System in the Volta Region were completed while Rehabilitation and Expansion of Ejura Pipe Water System in the Ashanti Region and Construction of CWSA Volta Regional Office were about 85% complete as at the end of the year. Details are in Table 2.5.

Table 2.5: Achievement on Project Implementation in the Year

S/N	Projects	Unit of Measurement	Annual Target	Cumulative Since Project Inception
1.	Rehabilitation and Expansion of Sefwi Wiawso Water System, Western North Region	%	60	32
2.	Laying of Transmission Pipelines for Yeji-Parambo-Prang Water System Extension in the Bono East Region	%	50	50
3.	Reconstruction of Asankragwa Water System, Western Region	%	80	50
4.	Reconstruction of Tumu Water System, Upper West	%	80	80
5.	Supply & Installation of Hybrid Submersible Pumps & Water Treatment Plants & Laying of Transmission Pipelines at Papaase & Essiam Water System Clusters in Central Region	%	100	100
6.	Rehabilitation and Expansion of Wulensi Water Systems, Northern Region	%	100	100
7.	Drilling and Construction of 5 Boreholes at Kwame Danso Water System, Bono East Region	%	100	100
8.	Rehabilitation and Expansion of Bole Water System, Savannah Region	%	100	100
9.	Rehabilitation of Adidome Water System Slow Sand Filtration	%	100	100
10.	Rehabilitation and Expansion of Ejura Pipe Water System, Ashanti Region	%	100	85
11.	Rehabilitation and Expansion of Goaso Water System, Ahafo Region	%	50	20
12.	Construction of CWSA Volta Region Office	%	100	65

2.6 Status of the Community Water and Sanitation Policy Reform

CWSA managed a total of one hundred and ninety (190) pipe water systems in one hundred and fifty (150) districts across the sixteen (16) regions of Ghana. This falls short of the two hundred and seventy-eight (278) pipe water systems targeted in the CWSA 2021-2024 SIP by 31.65% (88 pipe water systems). CWSA employed and deployed one thousand, one hundred and one (1,101) staff made up of five hundred and eighty-two (582) professionals (Water System Managers, Engineers, Water Safety Specialists, Community Relations Officers, Accountants and Revenue Officers) and five hundred and nineteen (519) auxiliary staff who are local community members to manage the pipe water systems.

E-billing software was rolled out in one hundred and eight (108) pipe water systems in fifteen (15) regions and implementation of smart-Tap technology is underway in ten (10) regions to improve billing and revenue collection efficiency. Reconstruction, rehabilitation and expansion of some existing pipe water systems and installation of state-of-the-art packaged water treatment plants were underway to improve safe water supply in some communities.

2.7 Summary of Income and Expenditure Statements

CWSA's total income for the year 2023 was GHS140,036,371 while total operational expenditure stood at GHS93,993,459.00, resulting in an income surplus of GHS46,042,912.00. However, there are some water systems under rehabilitation/reconstruction to which the surplus income is committed. The Agency recorded -47.23% decrease in income and 233.98% increase in expenditure compared to 2022. Find details in Table 2.6 and Appendix 3 (CWSA Year 2023 Audited Financial Statements).

Table 2.6: Summary of Income and Expenditure for 2023

Description	2022 (GHS)	2023 (GHS)	% Change
Income			
Government Subvention (Compensation, Goods & Services & Assets)	195,783,266.00	52,825,731.00	-73.02
Internally Generated Funds (IGF) ²	48,947,906.00	61,735,039.00	26.12
Donor Inflows	8,299,543.00	11,226,477.00	35.27
2% Rural Water Levy	12,334,824.00	14,249,124.00	15.52
Total	265,365,539.00	140,036,371.00	-47.23
Expenditure			
Compensation for Employees	35,652,652.00	41,518,636.00	16.45
Use of Goods and Services	39,159,466.00	52,474,823.00	34.00
CAPEX	2,590,890.00	164,513,815.00	6,249.70
Total	77,403,008.00	258,507,274.00	233.98
Surplus/Deficit		46,042,912.00	
Surplus / (Deficit) for the Year	187,962,531.00	- 88,816,642.36	- 147.25

² Internally Generated Funds is made up of Revenue from Sale of Water and Other Income

3. WASH INTERVENTIONS AND WATER COVERAGE

The section presents the status of WASH projects implemented by CWSA and in partnership with other WASH Sector players. These projects were carried out as part of CWSA's efforts towards achieving 63% water coverage by 2023, improve access to sanitation and hygiene services in CWSA operational areas and improve water safety in all pipe water systems as intended in the CWSA 2021-2024 SIP. The section further provides updates of national and regional safe water coverages in rural communities and small towns.

3.1 Status of Ongoing WASH Projects

As part of CWSA's efforts to increase water access in rural communities, towns, and peri-urban areas, the Agency continued the implementation of the Water Supply Improvement Project (WSIP) of the Ghana-Spain Debt Swap Development Programme (DSDP), and the Rural Water Utilization Project (R-WUP) during the 2023 operational year. The progress of these projects and other WASH projects implemented by CWSA and its partners are presented in Table 3.1.

Table 3.1: Status of Ongoing WASH Projects

Project Name	Amount Received/ Transferred (GHC)	Overall Project Target	Cumulative Achievement (Since Project Inception to end of year)	Remarks/ Challenges
Rural Water Utilization Project (R-WUP) (Western Region)	278,651.80	Construction of 2 pipe water systems at Adum Bansa and Wassa Dunkwa	<ul style="list-style-type: none"> ▪ High-level tank completed at Wassa Dunkwa ▪ Laying of distribution pipelines at Wassa Dunkwa 99% complete ▪ Water system management staff office at Wassa Dunkwa completed awaiting furnishing ▪ Siting undertaken at Adum Bansa ▪ Contractor procured for drilling of boreholes at Adum Bansa 	Construction of Adum Bansa Water System delayed due to difficulty in accessing ground water
Water Supply Improvement Project (WSIP) of the Ghana-Spain Debt Swap Development Programme (DSDP) (Volta Region)		Construction of 18No. pipe water systems and 1No. point source	<ul style="list-style-type: none"> ▪ 12No. pipe water systems completed and handed over ▪ 1No. Point source completed ▪ 4No. water systems under construction (4No. storage tanks, 5No. pumphouses, 31No. standpipes near completion) under Lot 4 ▪ 2No surface water systems under construction (2No.HLTs, pipework, 1No surface WTP and 20No. SPs completed) under Lot 6 	Project is progressing steadily
Five Districts Water Supply Project (Phase III) (Volta Region)		<ul style="list-style-type: none"> ▪ Laying of 23.3 km transmission and 110km distribution pipe network ▪ Construction of 1 booster station, and 4 water towers ▪ Construction of 163 standpipes ▪ Construction of 3 water towers ▪ Construction of 1 booster pumping station 	<ul style="list-style-type: none"> ▪ 33.5km transmission pipe network laid ▪ 138km distribution pipe network laid ▪ 1No. booster pumping station constructed ▪ 3No. water towers (50m3, 12m high) constructed ▪ 1No. concrete platform (8m high) with 3No. 10m3 polytanks constructed ▪ 113No. standpipes constructed 	Project under construction
Construction of CWSA Volta Regional Office Block (Volta Region)	6,497,369.23	<ul style="list-style-type: none"> ▪ Completion of 2-storey office block ▪ Drivers' lounge ▪ External works and fence wall ▪ Installation of Solar PV power source 	<ul style="list-style-type: none"> ▪ Main building: internal cabling, windows and burglar proofs installed and skimming completed ▪ Driver's lounge and security post: internal cabling works, windows and burglarproofs completed ▪ External works: fence wall completed pending painting 	Project is on-going
Ghana Red Cross Wash Project – WASH in HealthCare Facilities andSchool Phase 2 (Upper East Region)		<ul style="list-style-type: none"> ▪ Drilling of 20No. boreholes, fitted withhand pumps ▪ Drilling and mechanization of 8No. boreholes in 7No. health centres and 1No. in a secondary school 	<ul style="list-style-type: none"> ▪ 26No. boreholes successfully drilled and 19No. fittedwith hand pumps ▪ 6No. boreholes re-developed ▪ 9No. water closet toilet facilities completed and handed over 	Project has stalled

Project Name	Amount Received/ Transferred (GHC)	Overall Project Target	Cumulative Achievement (Since Project Inception to end of year)	Remarks/ Challenges
		<ul style="list-style-type: none"> ▪ Construction of 9No. water closet toilet facilities for 6No. health care facilities ▪ Construction of 6No. Limited Mechanized Systems for 6No. health care facilities ▪ Construction of 2No. water closet toilet facilities and 2No. Limited mechanized system for 2No. SHS ▪ Construction of 5No. KVIP for 3No. schools and 2No. KVIP for 2No. health care facilities ▪ Construction of Limited Mechanized Systems and water closet toilet facilities for 9No. selected health care facilities, construction of 4No. new incinerator and rehabilitation of 1No. existing incinerator for 5 health care facilities in Kassena Nankana Municipal, Nabdam, Binduri and Pusiga districts 	<ul style="list-style-type: none"> ▪ 7No. limited mechanized system completed and handed over ▪ 6No. KVIPs completed and handed over ▪ Preparation of tender documents and drawings for civil works completed for phase 2 	
UNICEF-Assisted WASH Project (Upper West Region)	692,638.28	Rehabilitation of Hamile-Happa Water System (Redevelopment of 5no boreholes & pumping test, hydraulic head assemblies, power improvement, 1.5km distribution network extensions and construction of 4No. standpipes)	<ul style="list-style-type: none"> ▪ 1.5km HDPE distribution network laid ▪ Assessment, repair and servicing of 3No. transformers completed ▪ 4No. standpipes constructed 	Project completed and facility in use
UNICEF assisted WASHProject (North East Region)	15,130.00	Rehabilitation of Bumbua Zio water system (mechanization of 2No. high yielding boreholes)	Site preparation and pumping test conducted	Project ishalted

Project Name	Amount Received/ Transferred (GHC)	Overall Project Target	Cumulative Achievement (Since Project Inception to end of year)	Remarks/ Challenges
Plan International Ghana Integrated Package for Sustainable Development (IPADEV) (Oti Region)		Drilling and construction of 10No. boreholes in 10No. communities in Jasikan Municipality	<ul style="list-style-type: none"> ▪ 10No boreholes drilled and pump tested in 10No. communities ▪ Water quality analysis conducted ▪ Handpumps installed on 6No. boreholes ▪ 4No. boreholes mechanized 	

3.2. Rehabilitation and Expansion of Water Systems Under CWSA Management

CWSA carried out reconstruction, rehabilitation and expansion work on some pipe water systems under the Agency's management. The purpose was to increase operational capacities of the water systems to deliver safe and reliable water services to the beneficiary communities and towns in support of the Agency's objective to increase annual revenues from sale of water from GHS35.8m in 2021 to GHS49.7m in 2023.

The major interventions carried out during the year in several pipe water systems to improve water supply in beneficiary communities included reconstruction, rehabilitation and expansion of Asankragwa in Western Region, Kwame Danso and Yeji in Bono East Region, Sefwi Wiawso in Western North Region, Goaso in Ahafo Region, Ejura in Ashanti Region, Papaase and Essiam in Central Region, Wulensi in Northern Region, Bole in Savannah Region, Tumu and Hamile Happa in Upper West Region, Adidome in Volta Region, Sirigu and Paga in Upper East Region, and Bumbua Zioof in North East Region. Details are presented in Table 3.2.

Table 3.2: Rehabilitation and Expansion Works on Water Systems Under CWSA Management

No.	Source of Funds	Water System	Contract Name	Total Contract Sum (GHS)	Contractor/ Supplier	Status
1.	GoG/IGF	Asankragwa, Kwame Danso and Sefwi Wiawso	Technical Assessment, Redesign and Construction supervision of Sefwi Wiawso, Asankragwa and Kwame Danso Water Supply Systems in the Western North, Western and Bono East Region – Lot 5	748,460.94	Phibeta Consult Limited	Construction supervision ongoing
2.	GoG/IGF	Asankragwa	Drilling and Construction of Boreholes, Supply and Installation of Hybrid Submersible Pumps with Solar farm, Supply and Laying of HDPE Transmission Pipelines, Construction of High-Level Tank and Installation of Package Treatment Plant on the Asankragwa Water System - Lot F1	12,017,251.80	Rahmex Enterprise Limited	Construction ongoing
3.	GoG/IGF	Asankragwa	Supply and Laying of 77km HDPE distribution pipelines on the Asankragwa Water System in the Western Region - Lot F2	12,737,861.53	Caksunity Services Limited	Construction ongoing
4.	GoG/IGF	Sefwi Wiawso	Drilling and Construction of Boreholes, Supply and Installation of Submersible Hybrid Pumps and Supply and laying of HDPE Transmission Pipelines on the Sefwi Wiaso Water System in the Western North Region - Lot E1	6,406,200.55	Pumptech Limited	Construction ongoing
5.	GoG/IGF	Sefwi Wiawso	Supply and Laying of HDPE Distribution Pipelines, Construction of Water System Management Office and Installation of Packaged Water Treatment Plants – Lot E2	15,277,939.69	Caksunity Services Limited	Construction ongoing
6.	GoG/IGF	Sefwi Wiawso	Supply and Laying of HDPE Distribution Pipelines, Construction of GLTS, HLT, Booster Station and Supply and Installation of Hybrid Booster Pumps – Lot E3	17,677,745.90	Caksunity Services Limited	Construction ongoing
7.	GoG/IGF	Kwame Danso	Drilling and Construction of 5No. boreholes on the Kwame Danso Water System in the Bono East Region	420,478.64	Namoo and Sons Limited	Completed

No.	Source of Funds	Water System	Contract Name	Total Contract Sum (GHS)	Contractor/ Supplier	Status
8.	GoG/IGF	Goaso	Technical Assessment and re-design and construction supervision of the Goaso Water System	314,099.63	Superhydro Limited	Construction supervision ongoing
9.	GoG/IGF	Goaso	Drilling of 5No. Boreholes, supply and installation of 9No. submersible hybrid pumps complete with solar farms, supply and laying of HDPE transmission pipelines, construction of water system management office and installation of packaged water treatment plants – Lot B1	24,721,068.21	Pumptech Limited	Construction ongoing
10.	GoG/IGF	Goaso	Supply and laying of 90km HDPE Distribution Pipelines and Supply and Construction of 2No. 200m3 HLTs – Lot B2	24,103,922.28	Beda Construction Engineers Limited	Construction ongoing
11.	GoG/IGF	Yeji	Rehabilitation and Expansion of the Yeji Water Supply System	6,702,413.52	Pumptech Limited	Completed
12.	GoG/IGF	Ejura	Laying of distribution pipelines, construction of reinforced concrete high-level tank and rehabilitation of 2no. GLT on the Ejura Water System - Lot 2	6,212,398.36	Construction Dynamics Limited	Construction ongoing
13.	GoG/IGF	Ejura	Laying of distribution pipelines and construction of WSM Office Building on the Ejura Water System - Lot 3	2,719,068.11	Construction Dynamics Limited	Completed
14.	GoG/IGF	Ejura	Drilling of 3No. Boreholes, Installation of 12No. Hybrid Submersible Pumps and Laying of Transmission Pipelines on the Ejura Water System – Lot 1	7,366,418.41	Pumptech Limited	Construction ongoing
15.	GoG/IGF	Papaase and Essiam	Supply and Installation of Hybrid submersible pumps and Package water treatment plants at Papaase and Essiam Clusters in the Central Region	6,781,734.03	Pumptech Limited	Completed
16.	GoG/IGF	Papaase and Essiam	Supply and laying of transmission Pipe lines at Papase and Essiam Clusters	7,051,715.00	Betterworld Engineering Limited	Completed

No.	Source of Funds	Water System	Contract Name	Total Contract Sum (GHS)	Contractor/ Supplier	Status
17.	GoG/IGF	Wulensi	Rehabilitation and Expansion of Wulensi Water System	1,593,494.91	Caksunity Services Limited	Completed
18.	GoG/IGF	Bole	Supply and installation of 2No. submersible hybrid pumps, supply and laying of HDPE Distribution pipes on the Bole Water System	2,418,829.86	Pumpstech Limited	Completed
19.	GoG/IGF	Tumu	Supply and Installation of 2No. submersible hybrid pumps, supply and laying of HDPE transmission pipelines and Construction of Water System Management Office on the Tumu Water System - C1	8,117,951.73	Pumpstech Limited	Construction ongoing
20.	GoG/IGF	Tumu	Supply and laying of distribution pipelines, supply and installation of package treatment plant, and construction of 2No. high level tanks on the Tumu Water Supply System in the Upper West Region - C 2	9,960,151.30	Dowin Limited	Construction ongoing
21.	GoG/IGF	Adidome	Rehabilitation of Slow Sand Filtration Treatment Plant on the Adidome Water Supply System – Lot 3	3,910,865.57	Dowin Limited	Completed
22.	UNICEF	Hamile Happa	Rehabilitation and Expansion of the Hamile Happa Water Supply System - LOT 1	678,567.28	Maduson Ent Ltd	Completed
23.	UNICEF	Sirigu and Paga	Rehabilitation of Sirigu and Paga water system - Upper East - LOT 2	1,583,501.54	WASS GH Ltd	Contract halted
24.	GoG/IGF	Saline and Juaben	Hydrogeological investigation, drilling and construction of 11No. 203mm boreholes with associated works for the Saline belt and Jnaben water systems - Lot 2	1,962,533.00	Joissam Ghana Limited	Hydrogeological investigation completed; Materials and rig being mobilized to site
25.	GoG/IGF	Saline and Kweiman-Danfa	Hydrogeological investigation, drilling and construction of 10No. 203mm boreholes with associated works for the Saline belt and Kweiman-Danfa water systems - Lot 1	2,027,740.00	E E & E Construct Limited	Hydrogeological investigation completed; Materials and rig being mobilized to site

3.2.1. Excerpts on some Rehabilitation and Expansion Works on Sefwi Wiawso Water Systems



Frameworks for solar works in progress by PUMPTECH Ltd



PUMPTECH Limited has installed a control valve.

3.2.2. Excerpts on the construction of 200m³ RCC HLT for Goaso Water Systems



Formwork and foundation footing of 1no. High-Level Tank by BEDA Construction Engineers Limited



Laying of 2,000m long HDPE pipes to unserved areas in Hwidiem community by CWSA

3.2.2. Excerpts on the Rehabilitation and Expansion of Wulensi Water System



Installed Solar Farm and Pump Control Panels in Wulensi Water System by CAKSUNITY Services Limited

3.3 Water Safety Interventions

Several water safety interventions were undertaken to address water safety issues and ensure safe water delivery in the communities. Water safety plans were also developed and implemented in the one hundred and ninety (190) pipe water systems managed by the Agency. Key among the interventions carried out as part of the implementation of the water safety plans were:

- i. regular washing of concrete tanks;
- ii. flushing of pipelines after repairs to prevent decolorization of water;
- iii. disinfection of water with sodium hypochlorite to prevent microbial contamination;
- iv. regular use of aluminum sulphate for suspended particle coagulation and reduction of turbidity in raw water;
- v. cleaning of treatment filters to prevent debris and particles in water;
- vi. regular cleaning of standpipes surroundings to prevent spirogyra growth;
- vii. chlorination of water storage tanks to prevent algae and scent in water;
- viii. regular corrosion maintenance to avoid chemical contamination; and
- ix. regular water quality testing and analysis;
- x. treatment of water with chlorine before distribution and regular monitoring of residual chlorine;
- xi. regeneration and backwashing of packaged water treatment plants;
- xii. education of water vendors and community members on safe handling of water (water collection, transportation and storage).

Details of identified water safety issues and interventions implemented to address them are presented in Table 3.3.

Table 3.3: Water Safety Interventions

S/N	Water Safety Issues	Interventions/Activities	Remarks
1.	Clogging of distribution pipelines and slow sand filters by accumulated crystalline debris	Testing of sampled water from distribution lines and cleaning of slow sand filters	Regular activity
2.	Peeling of interior plastering of concrete tanks	Regular washing of concrete tanks	Regular activity
3.	Decolorization of water due to frequent pipe burst	Regular flushes of pipelines after repairs	Regular activity
4.	Microbial contamination	Disinfection with sodium hypochlorite after repair of pipe leakages	Regular activity
5.	Turbid nature of raw surface water	Use of Aluminum Sulphate to coagulate suspended particles in raw water	Regular activity
6.	Debris, particles and odour in water	Cleaning of treatment filters.	Regular activity
7.	Open defecation around pump stations	Continuous education and sensitization of residents	Regular activity
8.	Spirogyra growth at standpipes	Regular cleaning of standpipe surroundings	Regular activity
9.	Unhygienic substances found in the high-level tanks through exposed covers	Provision of nets in high-level tanks	Regular activity
10.	Corroded inner lining of tanks / possible cause of chemical contamination	Polishing of corroded inner lining with an anti-rusting agent (corrosion maintenance)	Regular activity

S/N	Water Safety Issues	Interventions/Activities	Remarks
11.	Possible chemical contamination of water through the use of weedicides to clear bushy areas	Clearing of weeds at water installations than using weedicides	Regular activity
12.	Debris, algae and scent in water storage tanks	Chlorination of water storage tanks	Regular activity
13.	Presence of hydrogen sulphide gas, high fluoride, high iron and high salt content in some boreholes, wells and underground water	Disinfection using chlorine as an oxidizing agent to convert the hydrogen sulphide gas into insoluble sulphur, chlorine dosing and sampling of water for laboratory analysis	Regular activity

3.4 Community Safe Water Coverage

The sub-section provides statistics on safe water coverage in rural communities and small towns as at end of December 2023 as derived from the CWSA District Monitoring and Evaluation System (DiMES).

3.4.1 National Community Safe Water Coverage

As at end of December 2023, a total population of 14,824,902 was served with safe water out of the estimated total rural communities and small towns population of 23,960,559, resulting in a total of 9,135,657 unserved population. This translates into community safe water coverage of 61.87% for the year (see Figure 2) deviating from the projected coverage of 63% for 2023 as per the CWSA 2021-2024 SIP. The decrease (-1.13%) in the safe water coverage recorded in 2023 against the 63% target was mainly a result of the lack of funds to carry out some proposed rehabilitation and extensions to some newly proposed communities.

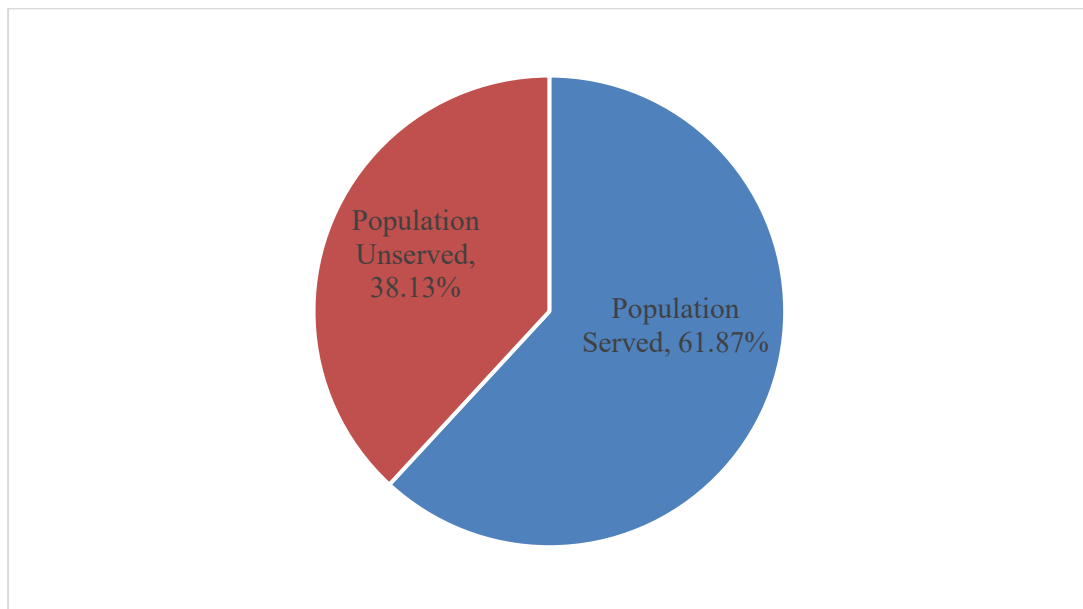


Figure 3.1: National Community Safe Water Coverage in 2023

3.4.2 Regional Comparative Analysis of Safe Water Coverages

Ahafo Region recorded the highest safe water coverage (74.83%), followed by Upper West Region with 73.39% and Oti Region with 70.25%. Volta, Greater Accra, Ashanti, North East, Eastern, Western, Northern, and Savannah regions recorded safe water coverages below the national average (61.87%). Find details in Table 3.3. District-level safe water coverage statistics are shown in Appendix 2.

Table 3.4: 2023 Community Safe Water Coverage by Regions

Region	No. of Comm unities	2023 Population	BH	HDW	SC PS	ST PS	LMS	RH S	GWCL	Total Population Served	% Coverage
Ahafo	963	522,168	829	242	0	20	114	0	0	390,726	74.83%
Ashanti	3,036	4,178,927	5,154	246	0	41	555	5	12	2,479,916	59.34%
Bono	1,228	1,049,504	1,389	92	1	27	152	0	0	693,759	66.10%
Bono East	1,393	1,070,139	1,325	93	1	27	158	0	0	712,331	66.56%
Central	3,597	2,573,516	2,195	457	10	62	11	79	192	1,700,019	66.06%
Eastern	3,332	2,139,730	2,985	1,142	0	35	33	15	0	1,254,291	58.62%
Greater Accra	1,106	1,100,681	543	103	8	7	3	0	53	669,855	60.86%
North East	728	743,107	1,047	255	0	12	3	0	0	437,003	58.81%
Northern	2,570	2,313,436	2,777	266	2	21	108	0	54	1,301,616	56.26%
Oti	976	659,957	1,102	12	17	13	10	1	0	463,618	70.25%
Savannah	1,021	833,462	1,080	57	0	11	24	0	0	427,507	51.29%
Upper East	2,258	1,950,681	3,730	543	0	33	50	0	0	1,247,708	63.96%
Upper West	1,152	1,063,029	2,397	0	2	22	27	0	0	780,161	73.39%
Volta	2,364	1,796,183	1,474	44	60	55	25	8	175	1,097,300	61.09%
Western	1,125	1,191,955	1,143	279	12	31	0	0	0	674,074	56.55%
Western North	703	774,084	725	173	8	21	2	0	0	495,018	63.95%
Total	27,552	23,960,559	29,895	4,004	121	438	1,275	108	486	14,824,902	61.87%

Legend

BH	Borehole (fitted with handpump)
HDW	Hand Dug Well
SCPS	Small Community Pipe System
STPS	Small Town Pipe System
LMS	Limited Mechanized System
RHS	Rain Harvesting System
GWCL	Ghana Water Company Limited (Pipe Extension)

3.4.3 Trends in Community Safe Water Coverage

As depicted in Figure 3, community safe water coverage increased from 40.00% in 2000 to 52.00% in 2005 and rose further to 61.74% in 2010 and 65.05% in 2015. However, it declined to 62.03% in 2016 and dropped from 62.13% in 2017 to 62.06% in 2018 and from 62.47% in 2020 to 61.61% in 2021. However, Safe water coverage rose to 62.63% due to the completion of some key water supply projects in 2022 and has dropped again to 61.87% in 2023. The oscillation in coverage is attributable to population growth, stagnation in investments and increasing non-functionality of existing water facilities.

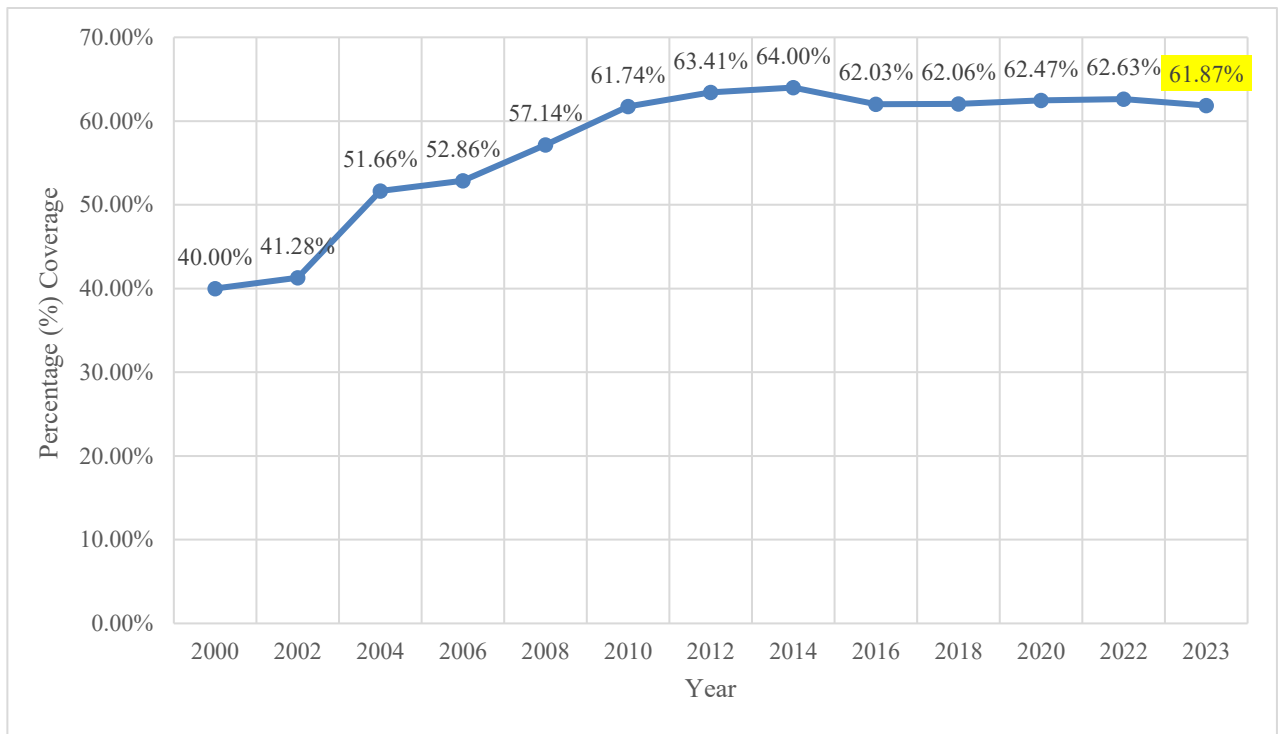


Figure 3.2: National Community Safe Water Coverage in 2023

4. GENERAL ADMINISTRATION AND HUMAN RESOURCE

The section presents the major activities of the CWSA Governing Board and Management, and highlights of the Agency’s staffing situation in the reporting year.

4.1 Composition of CWSA Board and Management

The CWSA Governing Board under the chairmanship of Mr. Kwesi Eduafo Yankey provided overall corporate oversight and strategic direction for the operations of the Agency during the year. Members of the Board are as follows.

No.	Name	Chairman / Member	Date of Appointment	Date of Tenure
1.	Mr. Kwesi Eduafo Yankey	Chairman	1st September, 2021	December 2024
2.	Pe Ditundini Adialli Ayagitam III	Member	1st September, 2021	December 2024
3.	Dr. Remy Puoru	Member	1st September, 2021	January 2023
New	James A. Abbey	Member (replaced Dr. Puoru)	29th September, 2023	December 2024
4.	Mr. Charles Nimako	Member	1st September, 2021	December 2024
5.	Mr. Donnan Kobla Tay	Member	1st September, 2021	April 2023
New	Akwetey Sampson	Member (replaced Mr. Tay)	29th September, 2023	December 2024
6.	Mr. Patrick Acheampong	Member	1st September, 2021	December 2024
7.	Madam Rose Appenteng	Member	1st September, 2021	December 2024
8.	Ing. Kwabena Gyasi Duku	Member	1st September, 2021	December 2024
9.	Mr. Aloysius Adjetey	Member/Chief Executive (replaced Dr. Ing. Worlanyo Kwadjo Siabi)	December, 2023	December, 2024

There was a total of nineteen (19) directors who led the various departments at the CWSA Head Office and the sixteen (16) regional offices towards realization of the vision of the CWSA Governing Board and the Chief Executive. Find details in Table 4.1.

Table 4.1: CWSA Head Office and Regional Directors

S/N	Name	Designation
1.	Mr. Kwame Sekyi-Akomea	Director of Administration and Human Resources, Head Office
2.	Ing. Joseph Emmanuel Jonah	Director of Engineering Services, Head Office
3.	Mr. Ali Muhammed	Ag. Director of Finance, Head Office
4.	Mr. Mohammed Ibrahim Adokor	Director of Planning and Investments, Head Office
5.	Afia Acheampomaa Duah	Director of Legal Affairs, Head Office
6.	Ing. Kofi Mensah Sebuabe	Regional Director, Volta
7.	Mr. Emmanuel Ato Quansah	Regional Director, Upper West
8.	Ing. Sampson Atakora	Regional Director, Eastern
9.	Ing. Alhaji Ahmed Ewura	Regional Director, Bono and Ag. Regional Director, Savanna
10.	Ing. Isaac Kwesi Brown	Regional Director, Central
11.	Ing. Francis Kwasi Enu	Regional Director, Ashanti
12.	Ing. Henry Franklin Asangbah	Regional Director, Western
13.	Mr. Godwin Elikem Kotoku	Ag. Regional Director, Greater Accra
14.	Mr. Gustav Merrit Osiakwan	Regional Director, North East; and Ag. Regional Director, Upper East
15.	Mr. Joseph Tei-Larbi	Ag. Regional Director, Northern
16.	Mrs. Pauline Abrafi Opong	Regional Director, Bono East

S/N	Name	Designation
17.	Ing. Henry Ampah Johnson	Regional Director, Oti
18.	Mr. Sylvester Eyramh	Regional Director, Ahafo
19.	Mr. Kwaku Osafo-Affum	Regional Director, Western North

4.2 Major Activities of CWSA Board and Management

The CWSA Governing Board met Four (4) times in the reporting year (on 29th March, 19th July, 14th November, and 13th December) to formulate strategies for ensuring universal access to improved WASH services in rural communities and small towns in Ghana. Key issues discussed were new staff establishment, scheme of service, water for the vulnerable in rural communities, risk management, and operational challenges in the sixteen (16) regions of Ghana. Community Water and Sanitation Agency on Friday, 15th December 2023 launched its 25-year anniversary to celebrate two and a half decades of ensuring the availability of sustainable water in rural and small towns. The event which was held at the Agency’s Head Office in Accra was under the theme, “25 years of sustaining WASH services: transforming rural and small towns water services delivery towards national development.”

4.3 Staffing

CWSA had a total of one Thousand, Three Hundred and Seventy-Five (1,375) staff at all levels of its operations. This comprises 53 Head Office staff, 221 Regional Office staff, 582 Water System Management Staff, and 519 Auxiliary Staff. There was a deficit of 57 staff at the Regional Office level as at end of December 2023. Find details in table 4.2 and 4.3.

Table 4.2: Staff Numbers and Vacancies at the Head Office and Regional Levels

Region Staff	AR	BR	AhR	BER	CR	ER	GAR	NR	NER	SR	UER	UWR	VR	OR	WR	WNR	HQ	Total
Expected	19	16	16	16	19	19	20	20	16	16	20	19	20	16	19	16	44	331
Available	17	15	12	10	15	15	18	15	13	7	17	15	14	10	17	11	53	274
Vacancies	2	1	4	6	4	4	2	5	3	9	3	4	6	6	2	5	-9	57

Table 4.3: Staff Numbers and Vacancies at the Water System Level

Region Staff	AR	BR	AhR	BER	CR	ER	GAR	NR	NER	SR	UER	UWR	VR	OR	WR	WNR	Total
WSMS Available	64	15	27	22	88	67	50	27	20	12	40	44	53	16	29	8	582
Vacancies	-	-	-	-	-	-	-	-	-	-	-	-	-	-	-	-	-
Auxiliary Staff Available	57	10	28	21	60	66	39	23	18	11	25	66	39	18	18	20	519
Vacancies	-	-	-	-	-	-	-	-	-	-	-	-	-	-	-	-	-

Legend

AR - Ashanti Region	NER - North East Region
BE - Bono Region	SR - Savannah Region
AhR - Ahafo Region	UER - Upper East Region
BER - Bono East Region	UWR - Upper West Region
CR - Central Region	VR - Volta Region
ER - Eastern Region	OR - Oti Region
GAR - Greater Accra Region	WR - Western Region
NR - Northern Region	WNR - Western North Region
	HQ - Head Office

4.4 Relevant Personnel Issues

Table 4.4: Key Personnel Issues

Personnel Issues	Head Office and Regional Staff	Water System Staff	Auxiliary Staff	Total
Recruitment	7	29	45	81
Retirement	4	2	11	17
Transfers	8	5	0	13
Promotion	66	84	0	150
Termination	1	16	2	19
Resignation	13	42	8	63
Vacation of Post	0	5	2	7
Deceased	1	0	0	1
Study Leave	1	5	0	6

5. CHALLENGES AND MITIGATIONS

The major operational challenges encountered during the reporting year were high non-revenue water, erratic power supply from the national grid, destruction of pipelines through road construction, inadequate sources for pipe water systems, irregular bulk water supply from GWL to saline belt pipe water systems and water safety issues. Details are as follows.

5.1 High Non-Revenue Water

High non-revenue water was a challenge to operational efficiency in community water services delivery during the year. Non-revenue water in the water systems managed by CWSA increased from 36.07% in 2022 to 39.39% in 2023 amounting to a revenue loss of about GHS37,278,559.40 to the Agency. This was mainly a result of the frequent pipe bursts and leakages due to overaged pipelines, destruction of pipelines by road contractors and private developers, illegal connections, malfunctioning service meters, and the absence of isolation valves on some pipe networks. The siting of buildings and temporal structures on transmission and distribution pipelines in some water systems also affected prompt detection and repairs of pipe bursts contributing to high non-revenue water. Such incidences are very common in Mafi-Kumase, Mafi Yingor, Mafi-Adidome, and Vakpo in Volta Region, Damanko-Kpassa and Nkwanta in Oti Region as well as Sandema in Upper East Region. As part of mitigation measures, efforts were made to discover illegal connections for disconnection, sanctioning, and possible regularization. Also, malfunctioning service meters were uncovered and replaced, some flat rate customers metered, and overaged/defective transmission and distribution pipelines were replaced in some pipe water systems.

5.2 Water Safety Issues

Water safety challenges affected safe water supply in some communities. Among the most common issues were high levels of iron, manganese, arsenic, fluoride, hardness and bacteriological contamination in water sources beyond the Ghana Standards Authority's (GSA) acceptable standards for drinking water supply. The water quality at Yeji Water System has deteriorated due to high turbidity of the intake water from the Lake Volta. Other affected communities included Effiefiso-Subin-Akwaboso water system in Central Region, Kusi, Boadua and Akim Wenchi in Eastern Region. Installation of packaged water treatment plants were ongoing to address the issues of iron and manganese in some affected water systems.

5.3 Inadequate Sources for Pipe Water Systems

There was inadequate water supply from existing source boreholes for many pipe water systems. Whilst many of the existing sources were low yielding, some pipe water systems relied on only one borehole as water source. This resulted in prolonged downtimes in instances of borehole blockage or breakdown of pumps, and contributed to the failure to meet water demands in some communities and inability of CWSA to meet its water production target. The most affected communities included Juaso, Juaben and Onwe in Ashanti Region, Nkrankwanta Water System in Bono Region, Akuma Braho and Prang in Bono East Region, Papase and Ayeldu Cluster water

systems in Central Region, Nkwanta, Dambai, Kwamekrom, Banda and Chinderi Water Supply Systems in Oti Region, the Bole Water Supply System in Savannah Region, Paga, Zebilla, Bongo, Pusiga and Sandema in Upper East Region, Akatsi and Amedzofe in Volta Region, Lawra, Nandom, Tumu, Jirapa, Busa, Funsu and Nadowli in Upper West Region, Agona Nkwanta in Western Region, Enchi, Essam Debiso, Sefwi Wiawso, Amafie, Adjoafua, Kwame Tawiakrom, Asempanaye and Elluokrom in Western North Region.

As part of efforts to address this challenge, CWSA commenced reconstruction of some water systems including Sefwi Wiawso/Amafie in Western North Region, Goaso in Ahafo Region, Asankragwa in Western Region, Ejura in Ashanti Region and Tumu in Upper West Region. Also, some existing boreholes were rehabilitated, and additional ones constructed to augment the production capacity of other severely affected pipe water systems. High-capacity pumps were also procured and installed on high yielding boreholes to improve water supply. However, more investments are required to provide adequate water sources to meet the water needs of the communities.

5.4 Erratic Power Supply from the National Grid and frequent Disconnections

Erratic power supply and voltage fluctuations resulted in frequent destruction of control panels and other electromechanical components of some pipe water systems especially water systems which had no dedicated power transformers or automatic voltage regulators leading to high maintenance costs. This also affected water production resulting in irregular water supply in the affected communities. The most affected communities included Atwedie, Bompata, Adugyama, Sabronum, Akrokerri, Bekwai, Ejura, Juaben, Juaso, Kwaso, and Onwe water systems in Ashanti Region, Akuma Brahoho, Krobo and Kwame Danso in Bono East Region, 3DWSS and KDWSS in Greater Accra Region, Nalerigu, Chereponi, Gambaga and Walewale in North East Region, Saboba, Tatale, Wulensi, Bimbilla, and Zabzugu Water Systems in Northern Region, Damanko-Kpassa, Nkwanta, Chinderi and Banda water supply systems in Oti Region, Funsu, Wellembelle, Gwollu, Lawra, Nandom and Jirapa Water Systems in Upper West Region. As part of mitigation measures, solar/hybrid pumps were installed in the most affected water systems to complement the power supply from the national grid. Automatic voltage regulators were also being installed to mitigate the effects of voltage fluctuations on water system components.

5.5 Halt of the Implementation of Water Supply Project Contracts

The rehabilitation of the Paga and Sirigu water systems under UNICEF has not been completed and the contract has been terminated which affected water supply. The lack of funds affected the work progress of the Goaso, Asankragua, and Sefwi Wiawso rehabilitation and expansion projects. The extension of transmission pipelines from Yeji to Parambo Prang could also not be implemented due to financial constraints.

6. RECOMMENDATIONS

The underlisted actions are strongly recommended for addressing the challenges outlined in the foregoing section.

1. CWSA to identify and regularize all illegal connections, meter all flat rate customers and replace all overaged and defective pipelines to reduce non-revenue water.
2. CWSA to expedite the ongoing installation of packaged water treatment plants in pipe water systems with water quality issues to improve drinking water safety towards achievement of the SDG target 6.1.
3. CWSA to expedite ongoing reconstruction and rehabilitation works to improve water supply in communities with water deficits.
4. CWSA to continuously engage GWL to ensure sustained water supply to the saline belt pipe water systems while ensuring expeditious construction of boreholes to improve water supply in the saline belt communities.
5. CWSA to scale up the construction of solar facilities in water systems to prevent overreliance on power supply from the national grid and reduce operational costs.
6. CWSA to procure and install dedicated power transformers and automatic voltage regulators in all pipe water systems to mitigate the adverse effects of intermittent power outages and voltage fluctuations.

7. FUTURE DIRECTION OF CWSA

The section presents the strategic direction of CWSA in the ensuing year. Key highlights are the key objectives and projected income and expenditure for the year 2023.

7.1 Key Objectives for 2024

The underlisted are the objectives of CWSA for the year 2024 as espoused in the Agency's 2021-2024 Strategic Investment Plan.

1. Achieve 63.63% rural water coverage by 2024
2. Review the current legal and institutional arrangements for community water services delivery
3. Restructure CWSA to respond to the Government of Ghana's directive on rural and small towns water supply in an efficient and effective manner to ensure sustainable water delivery
4. Generate GHS 62.29 million from sale of water in 2024
5. Prevent revenue leakages through sound financial risk management
6. Establish a support mechanism for sustainable management of point water systems
7. Improve access to sanitation and hygiene services in CWSA operational areas
8. Enhance CWSA's corporate image and visibility
9. Improve water safety in all pipe water systems through appropriate water safety practices
10. Improve operational efficiency through technology and innovation.

7.2 Projected Income and Expenditure for 2024

A total income of GHS161,491,187.61 is projected for the year 2024. This comprises GHS62,297,130.96 as revenue from water systems management (sale of water and other incomes), GHS20,534,880.00 as revenue from 2% GWL rural water levy, GHS76,982,965.65 as GoG releases and GHS1,676,211.00 as donor funding. Total expenditure is projected at GHS156,081,885.41 comprising GHS50,940,726.18 for compensation of employees, GHS43,385,117.86 for goods and services, and GHS61,756,041.37 for investments.

Table 7.1: Projected Income and Expenditure for 2024

Description	Total (GHS)
Income	
Revenue from sale of Water/Other Income	60,857,130.96
Other Income	1,440,000.00
GoG releases	76,982,965.65
2% GWL	20,534,880.00
Donor Funding	1,676,211.00
Total Income	161,491,187.61
Expenditure	
<i>Compensation of Employees</i>	50,940,726.18
<i>Use of Goods & Services</i>	43,385,117.86
<i>Investments</i>	61,756,041.37
Total Expenditure	156,081,885.41

8. CONCLUSION

Water services delivery improved in many communities as a result of routine system maintenance, rehabilitation, expansion, and reconstruction of some pipe water systems that were operating sub-optimally. Community safe water coverage reduced from 62.63 in 2022 to 61.87% in 2023 partly due to population growth, stagnation in investments, and increasing non-functionality of existing water facilities. However, a total of total of 9,135,657 unserved populations representing about 38.13% of rural and small towns populations are yet to be provided with safe water due to funding constraints. While Kwame Danso, Yeji, Papaase Essiam, Wulensi, Bole, Hamile Happa, and Adidome projects were completed in 2023, the anticipated progress expected to be achieved for the remaining projects is subject to the timely release of funds for payment of works done by the contractors. There is, therefore, the need for expedited actions for the release of project funds from the Government and WASH stakeholders, especially funding partners, to bridge the water coverage gaps towards the realization of the Government of Ghana's *'Water for All Agenda'* and the United Nations SDG 6 which is to ensure *'availability and sustainable management of water and sanitation for all'*.

APPENDIX 1: 2023 PERFORMANCE OF MONITORING INDICATORS AND TARGETS

S/N	PERFORMANCE INDICATORS	UNITS	TARGETS
A.	FINANCIAL/ECONOMIC		
1	Total Revenue/Income	GH¢	248,595,471.22
1.1	Government Subvention (Compensation, Goods & Services & Assets)	GH¢	71,853,731.31
1.2	Internally Generated Funds (IGF) ³	GH¢	51,781,501.91
1.3	Donor Inflows	GH¢	110,158,449.20
1.4	2% Rural Water Levy	GH¢	14,801,788.80
2	Retained Revenue	GH¢	-
3	Total Expenditure	GH¢	247,344,310.18
3.1.	Compensation	GH¢	31,125,345.31
3.2.	Goods & Services	GH¢	46,173,400.36
3.3.	CAPEx	GH¢	170,045,564.51
4	Surplus/ (Deficit)	GH¢	-
5	Surplus Payment	GH¢	-
6	Total Assets	GH¢	523,520,998.00
7	Current Assets	GH¢	22,949,446.00
8	Current Liabilities	GH¢	5,276,432.00
9	Total Liabilities	GH¢	5,276,432.00
10	Accumulated Funds	GH¢	518,244,567.00
	Transaction with Government		
11	Revenue Capping	GH¢	0
12	Public Service Obligation	GH¢	0
B.	EFFICIENCY/PRODUCTIVITY		
	Operations (Water Systems Management)		
1	Total Water Production	m ³	8,569,722.92
2	Non-Revenue Water	%	30
3	Payment Rate for Domestic Subscribers	%	80
4	Payment Rate for Institutional Subscribers	%	70
5	Payment Rate for Commercial Subscribers	%	80
6	New Connections with Water Meters	No.	5,000
	Resource Utilization		
7	Net Surplus Margin	%	0
8	Staff Cost / Total Revenue	%	22.69
9	Administrative Expenses / Total Revenue	%	18.67
10	Staff Strength as at 31 December 2023	No.	1,446
11	Labour Productivity (Total Revenue / Staff Strength)	GH¢	171,054
12	Total Revenue / Staff Cost	%	440.75
13	Recurrent Expenditure (OPEX)/IGF	%	85.62
C.	DYNAMIC EFFECTS		
1.	Submission of 2023 Human Resource Plan	Month	January, 2023

³ Internally Generated Funds is made up of Revenue from Sale of Water and Other Income

S/N	PERFORMANCE INDICATORS	UNITS	TARGETS
2.	Implementation of 2023 Human Resource Plan	%	100
4.	Submission of 2023 Maintenance Programme	Month	January, 2023
5.	Implementation of 2023 Maintenance Programme	%	100
6.	Submission of 2023 Safety Management Programme	Month	January, 2023
7.	Implementation of 2023 Safety Management Programme	%	100
D.	GOVERNANCE AND MANAGEMENT IMPROVEMENT		
	Corporate Governance		
1.	Submission of Board of Directors Charter and Action Plan	Month	January
2.	Submission of Evidence of Minutes of Board of Directors Meetings (e.g. Meeting Notice, Agenda & Attendance Register, etc.)	Week(s) After Approval	1
3.	Submission of Statutory (Audit and Risk) & Other Board Sub-Committees Action Plans and Reports	Week(s) After Approval	1
4.	Internal Audit Assessment Reports, Improvement Plans and Monitoring Reports	Week(s) After Approval	1
5.	Holding of Annual Stakeholders' Meeting	Month	August
6.	Environmental/Green Policy/Plan and Reports	Month	February
7.	Gender Balance at Management Level	Ratio	35%
8.	Submission of Strategic Plan (3-5yrs)	Month	October
9.	Submission of 2024 Annual (updated) Corporate Plan	Month	October
10.	Submission of 2022 Board Evaluation and Mid-Term External Assessment Reports, where applicable	Month	February
11.	Corporate Social Responsibility Policy/Plan	Month	February
	Compliance		
12.	Submission of filled-out Integrated Specified Entity Database forms (use the attached Database form)	Month	February
13.	Accuracy and Completeness of filled-out Integrated Specified Entity Database forms	%	100
14.	Status of Compliance (use the attached compliance questionnaire)	Month	February
15.	Conformance to SIGA Quarterly Reporting Format	Items	6
	Risks		
16.	Submission of Reports/Action Plans of Functioning Risk Committee	Week(s)	1
17.	Submission of Risks Log, Management Plan and Implementation Reports	Month	February
18.	Implementation of Risks Management Plan	%	100
E.	PROJECTS		
	Initiatives		
19.	Number buying or selling (inter-trading)	No.	5
	Project Implementation		
	List all Projects		
20.	Rehabilitation and expansion of Sefwi Wiawso Water System, Western North Region	% of implementation	60
21.	Laying of transmission pipelines for Yeji-Parambo-Prang Water System Extension	% of implementation	50

S/N	PERFORMANCE INDICATORS	UNITS	TARGETS
22	Reconstruction of Asankragwa Water System, Western Region	% of implementation	80
23	Reconstruction of Tumu Water System, Upper West	% of implementation	80
24	Supply & installation of hybrid submersible pumps & water treatment plants & laying of transmission pipelines at Papaase & Essiam water system clusters in CR	% of implementation	100
25	Rehabilitation and expansion of Wulensi Water Systems, Northern Region	% of implementation	100
26	Drilling and construction of 5 Boreholes at Kwame Danso Water System, Bono East Region	% of implementation	100
27	Rehabilitation and expansion of Bole Water System, Savannah Region	% of implementation	100
28	Rehabilitation of Adidome Water System Slow Sand Filtration	% of implementation	100
29	Rehabilitation and expansion of Ejura Small Town Pipe Water System, Ashanti Region	% of implementation	100
30	Rehabilitation and expansion of Goaso Water System, Ahafo Region	% of implementation	50
31	Construction of CWSA Volta Region Office	% of implementation	100

APPENDIX 2: NATIONAL COMMUNITY SAFE WATER COVERAGE STATISTICS



2023

National Coverage Statistics Potable Water (Community Based Water Systems)



	No Of Communities Population	Facilities										Population Group Served			RURAL Coverage	
		BH	HDW	SCFS	STPS	LMS	RHS	GWCL	Below 75	75 - 299	300 - 1999	2000 - 5000 4999	Over	RURAL Population Served	RURAL Coverage	
AHAFO	963	829	242	0	20	114	0	0	1,726	52,038	140,069	49,839	147,054	390,726	74.83%	
ASHANTI	3,036	5,154	246	0	41	555	5	12	519	71,499	1,091,111	618,333	698,454	2,479,916	59.34%	
BONO	1,228	1,389	92	1	27	152	0	0	1,151	43,193	203,281	154,722	291,412	693,759	66.10%	
BONO EAST	1,393	1,325	93	1	27	158	0	0	352	35,466	229,481	132,211	314,821	712,331	66.56%	
CENTRAL	3,597	2,195	457	10	62	11	79	192	4,145	82,656	577,786	414,205	621,227	1,700,019	66.06%	
EASTERN	3,332	2,985	1,142	0	35	33	15	0	3,319	123,716	591,915	264,405	270,936	1,254,291	58.62%	
GREATER ACCRA	1,106	543	103	8	7	3	0	53	1,063	30,031	289,653	151,922	197,186	669,855	60.86%	
NORTHEAST	728	1,047	255	0	12	3	0	0	242	17,755	230,544	75,516	112,946	437,003	58.81%	
NORTHERN	2,570	2,777	266	2	21	108	0	54	1,533	58,749	653,505	194,320	393,509	1,301,616	56.26%	
OTI	976	1,102	12	17	13	10	1	0	136	43,438	178,322	103,644	138,078	463,618	70.25%	
SAVANNAH	1,021	1,080	57	0	11	24	0	0	438	18,935	219,556	77,357	111,221	427,507	51.29%	
UPPER EAST	2,258	3,730	543	0	33	50	0	0	309	33,261	886,550	228,751	98,837	1,247,708	63.96%	
UPPER WEST	1,152	2,397	0	2	22	27	0	0	406	36,249	446,692	203,763	93,051	780,161	73.39%	
VOLTA	2,364	1,474	44	60	55	25	8	175	883	64,367	546,042	274,254	211,754	1,097,300	61.09%	
WESTERN	1,125	1,143	279	12	31	0	0	0	503	21,570	264,294	189,610	198,097	674,074	56.55%	



2023

National Coverage Statistics Potable Water (Community Based Water Systems)



	No Of Communities	Total Population	F a c i l i t i e s										Population Group Served		RURAL Coverage	
			BH	HDW	SCPS	STPS	LMS	RHS	GWCL	Below 75	75 - 299	300 - 1999	2000 - 4999	5000 and Over	RURAL Population Served	RURAL Coverage
WESTERN NORTH	703	774,084	725	173	8	21	2	0	0	694	14,469	146,931	102,855	230,069	495,018	63.95%
T O T A L	27,552	23,960,559	29,895	4,004	121	438	1,275	108	486	17,419	747,392	6,695,732	3,235,707	4,128,652	14,824,902	61.87%



2023

National Coverage Statistics Potable Water (Community Based Water Systems)



AHAFO Region	No Of Communities		Facilities										Population Group Served		RURAL Coverage	
	Total	Population	BH	HDW	SCPS	STPS	LMS	RHS	GWCL	Below 75	75 - 299	300 - 1999	2000 - 4999	5000 and Over	RURAL Population Served	RURAL Coverage
ASUNAFO NORTH	280	159,633	258	40	0	4	17	0	0	435	16,643	37,574	11,445	55,850	121,947	76.39%
ASUNAFO SOUTH	197	86,018	188	34	0	3	27	0	0	454	10,548	26,968	11,046	17,831	66,847	77.71%
ASUTIFI NORTH	152	82,462	96	88	0	5	28	0	0	316	7,892	19,079	9,938	25,668	62,893	76.27%
ASUTIFI SOUTH	122	52,516	67	26	0	3	27	0	0	141	5,586	13,847	6,251	12,569	38,394	73.11%
TANO NORTH	118	74,661	129	31	0	3	10	0	0	186	6,692	22,622	7,759	24,373	61,632	82.55%
TANO SOUTH	94	66,878	91	23	0	2	5	0	0	194	4,677	19,979	3,400	10,763	39,013	58.33%
T O T A L	963	522,168	829	242	0	20	114	0	0	1,726	52,038	140,069	49,839	147,054	390,726	74.83%



2023

National Coverage Statistics Potable Water (Community Based Water Systems)



ASHANTI Region	No Of Communities	Total Population	F a c i l i t i e s										Population Group Served			RURAL Coverage	
			BH	HDW	SCPS	STPS	LMS	RHS	GWCL	Below 75	75 - 299	300 - 1999	2000 - 4999	5000 and Over	RURAL Population Served	RURAL Coverage	
ADANSI ASOKWA DISTRICT	90	128,539	147	6	0	1	28	0	0	0	0	960	35,347	15,906	13,497	65,710	51.12%
ADANSI NORTH DISTRICT	34	70,601	101	0	0	3	4	0	0	0	0	746	15,871	11,644	24,638	52,899	74.93%
ADANSI SOUTH DISTRICT	184	160,719	204	26	0	0	23	0	1	0	0	2,119	62,367	11,765	14,613	90,864	56.54%
AFIGYA-KWABRE DISTRICT	48	114,530	114	0	0	1	0	0	0	0	0	299	20,142	12,219	10,282	42,942	37.49%
AFIGYA-KWABRE NORTH DISTRICT	30	56,867	136	0	0	0	1	0	0	0	52	103	12,982	15,977	14,900	44,014	77.40%
AHAFO ANO NORTH MUNICIPAL	122	115,604	93	30	0	1	23	0	0	0	0	3,851	33,151	11,700	11,222	59,924	51.84%
AHAFO ANO SOUTH WEST DISTRICT	135	109,376	171	6	0	1	23	0	0	0	0	5,872	40,531	8,100	16,098	70,601	64.55%
AHAFO-ANO SOUTH EAST DISTRICT	77	81,924	114	0	0	2	10	0	0	0	0	2,818	26,929	13,700	15,820	59,267	72.34%
AKROFUOM DISTRICT	78	70,970	77	33	0	1	1	0	0	0	0	396	26,596	6,591	7,176	40,759	57.43%
AMANSIE CENTRAL DISTRICT	210	161,928	265	17	0	1	11	0	0	0	46	3,689	70,181	24,660	15,164	113,740	70.24%
AMANSIE SOUTH DISTRICT	109	121,079	205	5	0	2	15	0	0	0	0	3,468	42,142	30,124	7,220	82,954	68.51%
AMANSIE WEST DISTRICT	66	98,176	147	2	0	2	20	0	0	0	0	727	32,713	22,518	3,300	59,258	60.36%
ASANTE AKIM CENTRAL MUNICIPAL	52	81,975	123	0	0	0	0	0	0	0	0	1,567	22,431	10,546	10,400	44,944	54.83%
ASANTE AKIM NORTH DISTRICT	60	111,271	132	0	0	0	0	0	0	0	0	755	26,397	10,400	11,200	48,752	43.81%
ASANTE AKIM SOUTH MUNICIPAL	161	215,567	514	10	0	5	7	1	0	0	0	3,491	80,869	47,288	48,713	180,361	83.67%
ATWIMA Mponua DISTRICT	302	212,830	444	24	0	1	13	1	1	1	88	14,031	95,803	31,356	20,954	162,232	76.23%
ATWIMA NWABIAGYA MUNICIPAL	47	116,759	81	1	0	0	0	0	0	0	72	1,799	14,972	18,366	53,247	88,456	75.76%
ATWIMA NWABIAGYA NORTH	117	129,649	206	0	0	0	2	0	2	0	0	6,000	32,231	31,745	30,275	100,251	77.32%
ATWIMA-KWANWOMA DISTRICT	69	135,661	142	18	0	1	9	0	0	0	0	838	26,967	23,345	14,112	65,262	48.11%
BEKWAI MUNICIPAL	114	180,454	226	9	0	3	34	1	0	0	55	1,745	57,115	41,706	37,334	137,955	76.45%
BOSOME FREHO DISTRICT	92	84,511	126	5	0	0	58	2	0	0	0	2,446	40,924	15,863	0	59,233	70.09%
BOSOMTWE DISTRICT	69	138,428	121	0	0	2	85	0	0	0	0	396	42,476	29,868	9,366	82,106	59.31%
EJISU MUNICIPAL	40	127,051	65	12	0	2	25	0	0	0	0	568	9,934	18,600	23,200	52,302	41.17%



2023

National Coverage Statistics Potable Water (Community Based Water Systems)



ASHANTI Region	No Of Communities	Total Population	F a c i l i t i e s										Population Group Served			RURAL Coverage	
			BH	HDW	SCPS	STPS	LMS	RHS	GWCL	Below 75	75 - 299	300 - 1999	2000 - 4999	5000 and Over	RURAL Population Served	RURAL Coverage	
EJURA-SEKYEDUMASI MUNICIPAL	101	161,866	179	1	0	3	17	0	1	0	3,716	32,787	13,946	91,276	141,725	87.56%	
JUABEN MUNICIPAL	44	81,312	78	4	0	2	11	0	0	74	825	14,628	14,900	20,416	50,843	62.53%	
KWABRE EAST MUNICIPAL	48	172,638	136	11	0	1	43	0	0	0	320	15,618	32,196	38,012	86,146	49.90%	
MAMPONG MUNICIPAL	48	72,561	53	1	0	3	3	0	2	0	0	11,972	16,663	8,886	37,521	51.71%	
OBUASI MUNICIPAL	53	193,275	114	4	0	0	9	0	3	0	386	19,804	9,600	30,389	60,179	31.14%	
Obuasi East District	9	74,316	8	1	0	0	2	0	2	0	0	495	1,900	16,708	19,103	25.71%	
OFFINSO MUNICIPAL	66	87,587	99	2	0	0	32	0	0	0	824	23,569	17,063	3,600	45,056	51.44%	
OFFINSO NORTH DISTRICT	69	61,232	61	2	0	0	9	0	0	0	733	17,902	6,700	2,100	27,435	44.81%	
SEKYERE AFRAM PLAINS DISTRICT	66	38,774	52	0	0	0	0	0	0	0	1,600	14,398	0	1,600	17,598	45.39%	
SEKYERE CENTRAL DISTRICT	101	112,701	113	6	0	1	24	0	0	132	2,128	27,428	7,669	21,276	58,633	52.03%	
SEKYERE EAST DISTRICT	40	62,803	89	6	0	1	10	0	0	0	1,009	18,042	10,584	7,129	36,764	58.54%	
SEKYERE KUMAWU DISTRICT	29	95,025	45	0	0	0	1	0	0	0	199	6,741	6,000	3,700	16,640	17.51%	
SEKYERE SOUTH DISTRICT	56	140,368	173	4	0	1	2	0	0	0	1,075	18,656	17,125	40,631	77,487	55.20%	
T O T A L	3,036	4,178,927	5,154	246	0	41	555	5	12	519	71,499	1,091,111	618,333	698,454	2,479,916	59.34%	



2023

National Coverage Statistics Potable Water (Community Based Water Systems)



BONO EAST Region	No Of Communities		F a c i l i t i e s										Population Group Served			RURAL Coverage	
	Total	Population	BH	HDW	SCPS	STPS	LMS	RHS	GWCL	Below 75	75 - 299	300 - 1999	2000 - 4999	5000 and Over	RURAL Population Served	RURAL Coverage	
ATEBUBU-AMANTIN	179	138,246	161	0	0	3	16	0	0	0	4,157	29,708	17,458	47,387	98,710	71.40%	
KINTAMPO MUNICIPAL	86	140,091	133	1	0	4	1	0	0	42	958	23,578	13,067	66,531	104,176	74.36%	
KINTAMPO SOUTH	119	103,273	163	1	0	4	23	0	0	0	2,574	38,151	15,750	15,842	72,317	70.03%	
NKORANZA MUNICIPAL	119	118,680	113	3	0	6	11	0	0	49	4,045	21,617	15,338	45,957	87,006	73.31%	
NKORANZA NORTH	67	91,030	129	9	0	1	6	0	0	30	373	24,048	14,559	11,682	50,692	55.69%	
PRU EAST	188	75,208	129	3	0	2	3	0	0	0	2,860	17,890	1,200	42,402	64,352	85.57%	
PRU WEST	91	86,517	103	1	0	1	40	0	0	0	2,427	17,159	9,620	24,077	53,283	61.59%	
SENE EAST	90	55,266	88	0	1	1	10	0	0	71	3,321	7,349	9,517	11,374	31,632	57.24%	
SENE WEST	147	82,594	151	0	0	1	14	0	0	104	3,045	15,045	23,842	13,662	55,698	67.44%	
TECHIMAN MUNICIPAL	212	98,115	82	56	0	1	25	0	0	56	7,267	24,281	7,460	1,500	40,564	41.34%	
TECHIMAN NORTH	95	81,119	73	19	0	3	9	0	0	0	4,439	10,655	4,400	34,407	53,901	66.45%	
T O T A L	1,393	1,070,139	1,325	93	1	27	158	0	0	352	35,466	229,481	132,211	314,821	712,331	66.56%	



2023

National Coverage Statistics Potable Water (Community Based Water Systems)



BONO Region	No Of Communities	Total Population	F a c i l i t i e s										Population Group Served			RURAL Coverage		
			BH	HDW	SCPS	STPS	LMS	RHS	GWCL	Below 75	75 - 299	300 - 1999	2000 - 4999	5000 and Over	RURAL Population Served	RURAL Coverage		
BANDA	31	41,835	68	0	1	0	17	0	0	0	0	44	0	8,821	13,526	9,483	31,874	76.19%
BEREKUM MUNICIPAL	55	47,223	81	6	0	0	10	0	0	0	0	0	1,963	13,723	9,216	0	24,902	52.73%
BEREKUM WEST	34	61,644	76	2	0	6	14	0	0	0	0	0	756	11,447	12,664	26,504	51,371	83.33%
DORMAA EAST	137	56,203	90	12	0	1	11	0	0	0	0	289	5,757	14,857	5,700	0	26,603	47.33%
DORMAA MUNICIPAL	87	78,965	141	11	0	1	33	0	0	0	0	128	4,142	31,150	12,871	2,100	50,391	63.81%
DORMAA WEST	133	54,136	60	23	0	1	9	0	0	0	0	101	4,313	10,208	5,900	6,920	27,442	50.69%
JAMAN NORTH	47	129,362	156	1	0	5	4	0	0	0	67	1,556	12,338	18,357	65,861	98,179	75.89%	
JAMAN SOUTH	101	138,643	204	1	0	6	2	0	0	0	0	0	4,179	28,646	31,186	49,660	113,671	81.99%
SUNYANI MUNICIPAL	106	37,576	68	23	0	0	7	0	0	0	71	5,511	10,426	2,700	2,600	21,308	56.71%	
SUNYANI WEST MUNICIPAL	182	74,901	102	13	0	0	30	0	0	0	105	8,375	19,665	4,400	3,700	36,245	48.39%	
TAIN	180	185,237	222	0	0	4	15	0	0	0	273	5,230	28,532	21,974	50,857	106,866	57.69%	
WENCHI	135	143,779	121	0	0	3	0	0	0	0	73	1,411	13,468	16,228	73,727	104,907	72.96%	
T O T A L	1,228	1,049,504	1,389	92	1	27	152	0	0	0	1,151	43,193	203,281	154,722	291,412	693,759	66.10%	



2023

National Coverage Statistics Potable Water (Community Based Water Systems)



CENTRAL Region	No Of Communities	Total Population	F a c i l i t i e s										Population Group Served			RURAL Coverage	
			BH	HDW	SCPS	STPS	LMS	RHS	GWCL	Below 75	75 - 299	300 - 1999	2000 - 4999	5000 and Over	RURAL Population Served	RURAL Coverage	
ABURA ASEBU KWAMANKESE	263	123,582	175	13	0	5	3	2	26	663	6,128	45,910	28,893	25,297	106,891	86.49%	
AGONA EAST	242	103,920	130	23	0	1	0	0	8	1,519	7,380	15,595	7,117	20,115	51,726	49.77%	
AGONA WEST	248	204,253	45	12	0	0	1	0	19	208	3,070	13,539	11,191	121,213	149,221	73.06%	
AJUMAKO ENYAN ESIAM	188	136,592	136	18	0	4	1	0	28	361	5,754	42,551	31,875	45,201	125,742	92.06%	
ASIKUMA ODOBEN BRAKWA	512	140,195	204	25	3	6	4	0	1	665	9,669	28,635	29,741	40,335	109,045	77.78%	
ASSIN FOSO	110	132,529	113	23	0	4	0	0	0	107	3,746	30,901	24,436	40,479	99,669	75.21%	
ASSIN NORTH	183	134,952	173	22	0	7	2	0	0	53	3,873	40,201	26,933	22,069	93,129	69.01%	
ASSIN SOUTH	225	155,492	241	29	2	9	0	0	0	0	8,427	43,891	49,929	21,920	124,167	79.85%	
AWUTU SENYA	133	137,835	82	14	0	3	0	0	24	0	7,552	33,905	7,395	74,868	123,720	89.76%	
AWUTU SENYA EAST	19	65,538	7	4	0	0	0	0	4	0	466	1,945	13,123	47,924	63,458	96.83%	
CAPE COAST	59	142,309	19	6	0	0	0	0	0	0	626	3,943	2,200	1,400	8,169	5.74%	
EFFUTU MUNICIPAL	13	9,305	3	1	0	0	0	0	0	0	0	1,368	0	0	1,368	14.70%	
EKUMFI	57	73,304	30	0	0	0	0	0	10	50	405	14,549	6,568	14,785	36,357	49.60%	
GOMOA CENTRAL	44	83,041	37	72	0	0	0	30	0	0	683	11,270	13,899	6,175	32,027	38.57%	
GOMOA EAST	50	84,486	37	18	0	0	0	46	0	0	554	10,179	4,025	6,075	20,833	24.66%	
GOMOA WEST	80	153,051	50	83	0	1	0	0	0	0	538	26,532	11,890	3,400	42,360	27.68%	
KOMENDA EDINA EGUAFU ABIREM	126	128,540	72	27	1	1	0	0	51	134	2,699	40,354	64,201	10,087	117,475	91.39%	
MFANTSEMAN	92	103,324	46	5	0	3	0	1	20	60	4,131	23,930	12,262	47,013	87,396	84.58%	
TWIFO ATTI MORKWA	393	135,222	188	33	2	1	0	0	0	104	7,107	45,530	18,013	0	70,754	52.32%	
TWIFO HEMANG LOWER DENKYIRA	362	101,763	110	16	0	5	0	0	0	163	3,583	25,187	14,765	10,661	54,359	53.42%	
UPPER DENKYIRA EAST	121	140,082	165	10	0	5	0	0	1	58	3,681	43,857	12,235	49,422	109,253	77.99%	
UPPER DENKYIRA WEST	77	84,201	132	3	2	7	0	0	0	0	2,584	34,014	23,514	12,788	72,900	86.58%	
T O T A L	3,597	2,573,516	2,195	457	10	62	11	79	192	4,145	82,656	577,786	414,205	621,227	1,700,019	66.06%	



2023

National Coverage Statistics Potable Water (Community Based Water Systems)



EASTERN Region	No Of Communities	Total Population	Facilities										Population Group Served				RURAL Coverage		
			BH	HDW	SCPS	STPS	LMS	RHS	GWCL	Below 75	75 - 299	300 - 1999	2000 - 4999	5000 and Over	RURAL Population Served	RURAL Coverage			
AKWAPIM NORTH	237	84,282	110	111	0	0	5	7	0	0	0	0	207	10,341	31,027	4,758	0	46,333	54.97%
AKWAPIM SOUTH MUNICIPAL	100	38,076	58	71	0	0	2	2	0	0	0	0	382	5,821	16,454	2,400	0	25,057	65.81%
AKYEMANSA	92	87,570	155	32	0	2	3	0	0	0	0	0	156	2,628	26,286	22,475	8,876	60,421	69.00%
ASUOGYAMAN	132	89,846	126	46	0	0	3	0	0	0	0	0	115	6,534	41,695	13,426	5,811	67,581	75.22%
ATIWA	116	155,096	205	37	0	2	5	0	0	0	0	0	0	4,348	22,127	16,000	60,408	102,883	66.34%
AYENSUANO	179	67,896	127	120	0	0	1	0	0	0	0	0	200	9,225	23,205	400	0	33,030	48.65%
BIRIM CENTRAL MUNICIPAL	125	86,459	111	3	0	1	0	0	0	0	0	0	150	3,419	16,237	9,757	21,547	51,110	59.11%
BIRIM NORTH	86	62,602	135	50	0	5	3	0	0	0	0	0	115	5,104	21,290	15,450	7,380	49,339	78.81%
BIRIM SOUTH	117	100,945	129	12	0	1	1	0	0	0	0	0	65	3,852	28,305	12,865	25,838	70,925	70.26%
DENKYEMBOUR	132	118,943	112	57	0	6	0	0	0	0	0	0	70	4,759	20,472	15,273	39,950	80,524	67.70%
EAST AKIM MUNICIPAL	136	106,348	160	14	0	2	1	3	0	0	0	0	0	6,118	26,394	15,500	30,087	78,099	73.44%
FANTEAKWA	147	96,107	188	8	0	2	0	0	0	0	0	0	139	4,310	40,066	9,565	6,592	60,672	63.13%
KWAEBIBIREM	100	93,079	123	65	0	2	0	0	0	0	0	0	74	4,978	16,001	17,969	18,057	57,079	61.32%
KWAHU AFRAM PLAINS NORTH	184	82,425	94	7	0	2	0	0	0	0	0	0	98	4,870	13,495	9,136	8,722	36,321	44.07%
KWAHU AFRAM PLAINS SOUTH	134	94,006	165	4	0	2	0	0	0	0	0	0	126	4,024	32,304	10,284	7,854	54,592	58.07%
KWAHU EAST	106	57,514	102	8	0	0	0	0	0	0	0	0	126	2,671	12,788	11,063	0	26,648	46.33%
KWAHU SOUTH	97	65,886	73	41	0	2	0	0	0	0	0	0	343	2,029	18,022	6,621	0	27,015	41.00%
KWAHU WEST MUNICIPAL	102	88,721	97	36	0	0	0	0	0	0	0	0	0	1,424	29,204	15,599	0	46,227	52.10%
LOWER MANYA KROBO	76	46,454	32	14	0	0	1	0	0	0	0	0	0	3,140	7,132	5,623	7,469	23,364	50.29%
NEW JUABEN MUNICIPAL	44	23,239	28	5	0	0	0	0	0	0	0	0	0	2,056	4,884	0	400	7,340	31.58%
NSAWAN ADOAGYI MUNICIPAL	66	21,207	38	46	0	0	0	0	0	0	0	0	140	3,774	8,613	2,400	0	14,927	70.39%
SUHUM MUNICIPAL	127	96,813	93	94	0	1	3	0	0	0	0	0	82	5,368	14,079	11,486	1,000	32,015	33.07%
UPPER MANYA KROBO	282	157,820	203	63	0	2	3	0	0	0	0	0	0	8,135	51,969	8,149	5,280	73,533	46.59%



2023

National Coverage Statistics Potable Water (Community Based Water Systems)



EASTERN Region	No Of Communities Population		F a c i l i t i e s										Population Group Served		RURAL Coverage	
	Total		BH	HDW	SCPS	STPS	LMS	RHS	GWCL	Below 75	75 - 299	300 - 4999	2000 - 5000 and Over	RURAL Population Served	RURAL Coverage	
UPPER WEST AKIM	101	65,605	84	60	0	3	0	0	0	330	4,362	16,919	12,553	9,715	43,879	66.88%
WEST AKIM MUNICIPAL	75	50,113	95	40	0	0	0	0	0	241	2,565	17,414	7,000	0	27,220	54.32%
YILO KROBO	239	102,678	142	98	0	0	2	3	0	160	7,861	35,533	8,653	5,950	58,157	56.64%
T O T A L	3,332	2,139,730	2,985	1,142	0	35	33	15	0	3,319	123,716	591,915	264,405	270,936	1,254,291	58.62%



2023

National Coverage Statistics Potable Water (Community Based Water Systems)



GREATER ACCRA Region	No Of Communities	Total Population	Facilities										Population Group Served			RURAL Coverage		
			BH	HDW	SCPS	STPS	LMS	RHS	GWCL	Below 75	75 - 299	300 - 1999	2000 - 4999	5000 and Over	RURAL Population Served	RURAL Coverage		
ADA EAST	137	117,339	6	21	0	0	0	0	0	0	47	18	1,778	34,004	34,699	12,456	82,955	70.70%
ADA WEST	76	91,790	6	0	0	1	0	0	0	1	93	93	1,708	27,799	20,666	29,509	79,775	86.91%
ADENTA MUNICIPAL	19	44,093	3	0	0	0	0	0	0	0	0	0	479	2,136	2,888	400	5,903	13.39%
ASHAIMAN MUNICIPAL	2	1,761	0	0	0	0	0	0	0	0	0	0	0	1,267	0	0	1,267	71.95%
GA CENTRAL MUNICIPAL	3	12,597	4	0	0	0	0	0	0	0	0	0	0	400	1,200	0	1,600	12.70%
GA EAST	40	25,783	4	11	0	1	0	0	0	0	0	0	484	6,848	2,210	0	9,542	37.01%
GA SOUTH MUNICIPAL	252	175,059	232	28	1	0	1	0	0	0	0	50	10,463	63,354	11,002	0	84,869	48.48%
GA WEST	202	206,542	196	32	6	1	1	0	0	0	0	111	7,457	54,102	5,800	13,668	81,138	39.28%
KPONE-KATAMANSO	30	74,777	5	0	0	1	1	0	0	5	57	57	611	7,045	7,586	55,275	70,574	94.38%
LA-NKWANTANANG-MADINA	47	23,621	18	3	1	2	0	0	0	0	147	147	422	14,597	6,200	0	21,366	90.45%
NINGO-PRAMPAM	104	182,424	4	0	0	0	0	0	0	0	0	240	1,775	36,394	41,070	69,402	148,881	81.61%
SHAI-OSUDOKU	193	139,065	65	8	0	1	0	0	0	0	0	347	4,854	41,707	18,601	10,646	76,155	54.76%
TEMA METROPOLITAN ASSEMBLY	1	5,830	0	0	0	0	0	0	0	0	0	0	0	0	0	5,830	5,830	100.00%
TOTAL	1,106	1,100,681	543	103	8	7	3	0	0	53	1,063	30,031	289,653	151,922	197,186	669,855	60.86%	



2023

National Coverage Statistics Potable Water (Community Based Water Systems)



NORTH EAST Region	No Of Communities Population	F a c i l i t i e s										Population Group Served		RURAL Coverage					
		BH	HDW	SCPS	STPS	LMS	RHS	GWCL	Below 75	75 - 299	300 - 1999	2000 - 5000 4999	Over	RURAL Population Served	RURAL Coverage				
BUNKPURUGU-YUNYOO	252	338	1	0	2	0	0	0	0	0	0	0	110	5,800	78,472	16,854	18,843	120,079	55.24%
CHEREONI	193	193	34	0	1	0	0	0	0	0	0	0	118	6,725	39,423	2,000	12,045	60,311	59.39%
EAST MAMPRUSI	142	180	48	0	2	0	0	0	0	0	0	0	0	1,620	43,309	14,800	42,069	101,798	53.83%
MAMPURUGU MOAGDURI	44	108	52	0	1	0	0	0	0	0	0	0	0	801	22,389	13,200	9,657	46,047	77.90%
WEST MAMPRUSI	97	228	120	0	6	3	0	0	0	0	0	14	2,809	46,951	28,662	30,332	108,768	61.81%	
T O T A L	728	1,047	255	0	12	3	0	0	0	0	0	0	242	17,755	230,544	75,516	112,946	437,003	58.81%



2023

National Coverage Statistics Potable Water (Community Based Water Systems)



NORTHERN Region	No Of Communities Population	F a c i l i t i e s										Population Group Served			RURAL Coverage	
		BH	HDW	SCPS	STPS	LMS	RHS	GWCL	Below 75	75 - 299	300 - 1999	2000 - 5000 4999	Over 5000	RURAL Population Served	RURAL Coverage	
GUSHEGU	352	406	46	0	1	6	0	0	339	15,412	89,504	8,365	39,080	152,700	70.30%	
KARAGA	144	189	32	0	1	24	0	0	217	3,251	42,044	16,594	37,394	99,500	74.35%	
KPANDAI	252	199	3	2	4	0	0	0	138	1,775	38,258	13,276	37,430	90,877	42.95%	
KUMBUNGU	131	150,299	96	20	0	4	0	15	0	631	31,977	13,524	2,200	48,332	32.16%	
MION	117	88,037	163	9	0	2	0	0	94	4,689	28,714	19,948	11,979	65,424	74.31%	
NANTON	68	66,795	109	6	0	6	0	3	55	1,585	21,189	9,939	17,242	50,010	74.87%	
NANUMBA NORTH	200	225,336	259	10	0	4	0	0	127	3,445	56,078	19,187	57,541	136,378	60.52%	
NANUMBA SOUTH	142	149,340	111	3	0	3	1	0	18	1,060	24,968	8,100	31,578	65,724	44.01%	
SABOBA	283	141,333	146	29	0	2	0	0	97	7,038	39,261	4,263	10,703	61,362	43.42%	
SAGNARIGU	35	60,887	16	4	0	3	0	6	0	429	7,939	3,700	400	12,468	20.48%	
SAVELUGU	74	144,322	142	17	0	2	6	0	134	1,593	38,716	7,674	83,003	131,120	90.85%	
TAMALE RURAL	56	106,405	10	4	0	2	0	15	0	244	17,259	5,417	500	23,420	22.01%	
TATALE SANGULI	166	114,287	264	4	0	1	7	0	46	4,895	61,595	5,709	18,053	90,298	79.01%	
TOLON	136	178,790	107	50	0	0	23	0	2	1,579	27,398	25,859	12,000	66,836	37.38%	
YENDI	237	178,710	277	25	0	2	7	0	224	7,031	65,002	22,965	5,117	100,339	56.15%	
ZABZUGU	177	146,253	283	4	0	1	11	0	44	4,092	63,603	9,800	29,289	106,828	73.04%	
T O T A L	2,570	2,313,436	2,777	266	2	21	108	0	54	1,533	58,749	653,505	194,320	393,509	56.26%	



2023

National Coverage Statistics Potable Water (Community Based Water Systems)



OTI Region	No Of Communities	Total Population	Facilities										Population Group Served			RURAL Coverage			
			BH	HDW	SCFS	STPS	LMS	RHS	GWCL	Below 75	75 - 299	300 - 1999	2000 - 4999	5000 and Over	RURAL Population Served	RURAL Coverage			
BLAKOYE	102	85,948	131	1	5	0	2	0	0	0	0	0	0	3,976	23,017	22,009	9,080	58,082	67.58%
JASIKAN	68	58,893	79	7	4	4	1	0	0	0	0	0	0	4,092	13,616	17,095	13,206	48,009	81.52%
KADJEBI	152	85,303	137	3	5	2	2	1	0	0	0	0	63	6,326	20,824	21,114	11,598	59,925	70.25%
KRACHI EAST	221	112,167	131	0	1	1	4	0	0	0	0	0	73	5,964	22,009	4,607	21,811	54,464	48.56%
KRACHI NCHUMURU	106	69,393	141	0	0	3	1	0	0	0	0	0	0	6,130	21,538	7,665	15,261	50,594	72.91%
KRACHI WEST	67	51,178	87	0	1	1	0	0	0	0	0	0	0	3,345	14,824	4,960	16,537	39,666	77.51%
NKWANTA NORTH	88	79,113	110	0	0	2	0	0	0	0	0	0	0	3,657	18,232	8,883	28,565	59,337	75.00%
NKWANTA SOUTH	172	117,962	286	1	1	0	0	0	0	0	0	0	0	9,948	44,262	17,311	22,020	93,541	79.30%
T O T A L	976	659,957	1,102	12	17	13	10	1	0	0	0	0	136	43,438	178,322	103,644	138,078	463,618	70.25%



2023

National Coverage Statistics Potable Water (Community Based Water Systems)



SAVANNAH Region	No Of Communities	Total Population	F a c i l i t i e s										Population Group Served			RURAL Coverage		
			BH	HDW	SCPS	STPS	LMS	RHS	GWCL	Below 75	75 - 299	300 - 1999	2000 - 4999	5000 and Over	RURAL Population Served	RURAL Coverage		
BOLE	176	134,364	290	3	0	2	1	0	0	0	0	94	4,617	48,589	21,371	21,755	96,426	71.76%
CENTRAL GONJA	192	149,217	73	21	0	4	8	0	0	0	0	50	1,080	20,053	16,912	33,241	71,336	47.81%
EAST GONJA	171	143,583	117	13	0	0	5	0	0	0	0	40	1,351	25,825	11,616	4,200	43,032	29.97%
NORTH EAST GONJA	85	48,326	2	1	0	0	0	0	0	0	0	0	0	1,000	0	0	1,000	2.07%
NORTH GONJA	57	67,033	117	3	0	3	0	0	0	0	0	36	847	19,701	14,987	16,151	51,722	77.16%
SAWLA-TUNA-KALBA	278	207,050	349	4	0	1	0	0	0	0	0	180	9,749	78,457	6,000	19,474	113,860	54.99%
WEST GONJA	62	83,889	132	12	0	1	10	0	0	0	0	38	1,291	25,931	6,471	16,400	50,131	59.76%
T O T A L	1,021	833,462	1,080	57	0	11	24	0	0	0	0	438	18,935	219,556	77,357	111,221	427,507	51.29%



2023

National Coverage Statistics Potable Water (Community Based Water Systems)



UPPER EAST Region	No Of Communities	Total Population	F a c i l i t i e s										Population Group Served			RURAL Coverage		
			BH	HDW	SCPS	STPS	LMS	RHS	GWCL	Below 75	75 - 299	300 - 1999	2000 - 5000 4999	Over	RURAL Population Served	RURAL Coverage		
BAWKU MUNICIPAL ASSEMBLY	162	201,042	369	18	0	0	0	12	0	0	0	36	1,148	77,564	34,215	4,600	117,563	58.48%
BAWKU WEST	287	306,925	444	81	0	0	0	8	0	0	158	3,291	111,740	28,520	18,508	162,217	52.85%	
BINDURI	108	83,918	195	32	0	0	0	3	0	0	0	4,413	39,823	11,927	2,100	58,263	69.43%	
BOLGATANGA EAST	45	38,157	130	2	0	0	0	0	0	0	0	514	22,572	4,011	4,400	31,497	82.55%	
BOLGATANGA MUNICIPAL ASSEMBLY	134	101,012	216	12	0	0	0	0	0	0	0	829	57,022	10,782	1,600	70,233	69.53%	
BONGO	281	177,351	403	195	0	0	0	2	0	0	66	5,954	118,540	14,281	0	138,841	78.29%	
BUILSA NORTH	217	134,832	238	32	0	0	0	0	0	0	0	3,050	67,919	5,543	0	76,512	56.75%	
BUILSA SOUTH	94	61,751	189	5	0	0	0	1	0	0	0	2,078	43,713	4,644	0	50,435	81.67%	
GARU	103	77,998	132	2	0	0	0	0	0	0	0	922	35,005	0	13,824	49,751	63.78%	
KASSENA NANKANA MUNICIPAL	191	130,838	237	23	0	0	0	2	0	0	32	3,883	63,126	20,215	0	87,256	66.69%	
KASSENA NANKANA WEST	224	190,491	333	41	0	0	0	1	0	0	0	3,532	93,645	15,648	15,330	128,155	67.28%	
NABDAM	50	55,125	94	23	0	0	0	1	0	0	17	507	20,148	6,400	15,411	42,483	77.07%	
PUSIGA	94	131,727	208	2	0	0	0	8	0	0	0	742	41,382	19,858	11,162	73,144	55.53%	
TALENSI	86	108,610	172	37	0	0	0	11	0	0	0	706	36,468	26,407	11,102	74,683	68.76%	
TEMPANE	182	150,904	370	38	0	0	0	2	1	0	0	1,692	57,883	26,300	800	86,675	57.44%	
T O T A L	2,258	1,950,681	3,730	543	0	0	0	50	0	0	309	33,261	886,550	228,751	98,837	1,247,708	63.96%	



2023

National Coverage Statistics Potable Water (Community Based Water Systems)



UPPER WEST Region	No Of Communities	Total Population	F a c i l i t i e s							Population Group Served			RURAL Coverage			
			BH	HDW	SCPS	STPS	LMS	RHS	GWCL	Below 75	75 - 299	300 - 1999	2000 - 5000 4999	Over	RURAL Population Served	RURAL Coverage
DAFFIAMA-BUSSIE-ISSA	51	48,853	131	0	0	1	1	0	0	56	1,537	15,125	19,954	0	36,672	75.07%
JIRAPA	154	126,341	361	0	0	1	0	0	0	52	6,179	69,131	14,340	13,598	103,300	81.76%
LAMBUSSIE-KARNI	74	74,125	187	0	0	3	0	0	0	0	837	36,049	13,821	8,849	59,556	80.35%
LAWRA	108	87,770	240	0	0	2	0	0	0	73	2,732	44,851	9,715	14,859	72,230	82.29%
NADOWLI-KALEO	117	101,703	259	0	0	4	0	0	0	0	5,040	43,963	29,691	5,124	83,818	82.41%
NANDOM	88	77,244	223	0	0	1	1	0	0	47	2,500	38,060	12,525	11,010	64,142	83.04%
SISSALA EAST	59	81,940	120	0	0	3	1	0	0	0	1,443	20,882	16,049	21,510	59,884	73.08%
SISSALA WEST	56	76,630	203	0	0	1	2	0	0	0	1,643	33,427	22,674	9,301	67,045	87.49%
WA	82	142,813	138	0	0	3	20	0	0	0	1,494	24,416	27,926	8,800	62,636	43.86%
WA EAST	141	107,296	201	0	2	2	2	0	0	67	3,777	42,551	22,899	0	69,294	64.58%
WA WEST	222	138,314	334	0	0	1	0	0	0	111	9,067	78,237	14,169	0	101,584	73.44%
T O T A L	1,152	1,063,029	2,397	0	2	22	27	0	0	406	36,249	446,692	203,763	93,051	780,161	73.39%



2023

National Coverage Statistics Potable Water (Community Based Water Systems)



VOLTA Region	No Of Communities	Total Population	F a c i l i t i e s										Population Group Served			RURAL Coverage		
			BH	HDW	SCPS	STPS	LMS	RHS	GWCL	Below 75	75 - 299	300 - 1999	2000 - 4999	5000 and Over	RURAL Population Served	RURAL Coverage		
ADAKLU-ANYIGBE	51	47,643	52	8	2	0	0	3	0	0	0	0	983	23,832	6,931	0	31,746	66.63%
AFADZATO SOUTH	93	85,380	136	2	7	7	5	0	0	0	0	0	960	38,383	22,059	0	61,402	71.92%
AGORTIME ZIOPE	98	67,524	72	1	1	1	1	0	0	0	0	0	2,735	23,181	7,251	8,195	41,362	61.26%
AKATSI NORTH	54	29,376	65	1	0	1	0	0	0	0	0	0	1,221	19,188	0	0	20,409	69.48%
AKATSI SOUTH	332	153,810	187	0	5	0	1	0	0	0	0	262	12,996	38,664	2,880	7,792	62,594	40.70%
CENTRAL TONGU	308	132,956	71	0	2	5	0	0	0	0	69	8,224	52,671	4,269	9,142	74,375	55.94%	
HO MUNICIPAL ASSEMBLY	65	69,472	88	15	9	4	2	0	0	10	0	1,323	42,027	8,612	0	51,962	74.80%	
HO WEST	104	137,819	176	7	11	8	3	0	0	2	0	821	53,932	29,569	11,947	96,269	69.85%	
HOHOE	69	90,756	134	0	6	5	0	0	0	0	0	1,252	28,246	38,857	0	68,355	75.32%	
KETA MUNICIPAL ASSEMBLY	160	194,933	16	3	3	1	0	0	0	71	58	4,621	53,680	58,091	13,478	129,928	66.65%	
KETU NORTH	287	180,864	139	4	2	6	6	0	0	0	146	11,532	31,704	500	61,971	105,853	58.53%	
KETU SOUTH	202	181,772	76	0	1	5	0	0	0	0	23	3,717	26,697	8,862	28,365	67,664	37.22%	
KPANDO	31	50,835	51	0	1	3	3	0	0	1	0	291	12,610	11,417	8,440	32,758	64.44%	
NORTH DAYI	66	100,313	91	0	6	2	0	0	0	2	0	693	29,495	27,333	27,398	84,919	84.65%	
NORTH TONGU	205	137,431	63	0	0	2	1	1	2	4	0	1,601	27,241	20,200	23,122	72,164	52.51%	
SOUTH DAYI	40	53,580	46	0	3	4	0	0	1	10	0	896	17,802	10,727	11,904	41,329	77.14%	
SOUTH TONGU	199	81,719	11	3	1	1	0	0	5	75	325	10,501	26,689	16,696	0	54,211	66.34%	
T O T A L	2,364	1,796,183	1,474	44	60	55	25	8	175	883	64,367	546,042	274,254	211,754	1,097,300	61.09%		



2023

National Coverage Statistics Potable Water (Community Based Water Systems)



WESTERN NORTH Region	No Of Communities		F a c i l i t i e s										Population Group Served		RURAL Coverage		
	Total Population	Total Communities	BH	HDW	SCPS	STPS	LMS	RHS	GWCL	Below 75 - 299			2000 - 4999	5000 and Over	RURAL Population Served	RURAL Coverage	
										75	299	4999					
AOWIN MUNICIPAL	128	107,173	138	31	1	3	0	0	0	0	51	3,218	30,844	18,235	14,618	66,966	62.48%
BIA EAST	74	46,346	34	3	0	0	0	0	0	0	50	815	6,741	2,800	0	10,406	22.45%
BIA WEST	94	94,039	60	24	1	4	1	0	0	181	1,492	9,469	2,941	37,607	51,690	54.97%	
BIBIANI-ANHWIASO-BEKWAI MUNICIPAL	88	156,622	144	14	3	2	0	0	0	107	2,376	25,199	25,006	71,608	124,296	79.36%	
BODI	43	65,320	51	11	0	4	0	0	0	60	1,122	8,442	10,975	17,407	38,006	58.18%	
JUABESO	71	69,574	58	18	1	2	0	0	0	19	569	10,575	14,845	5,738	31,746	45.63%	
SEFWI AKONTOMBRA	61	49,529	76	44	0	2	1	0	0	128	2,192	18,243	10,396	5,942	36,901	74.50%	
SEFWI WIAWISO MUNICIPAL	106	144,982	127	25	2	3	0	0	0	98	2,012	27,504	16,057	62,186	107,857	74.39%	
SUAMAN	38	40,499	37	3	0	1	0	0	0	0	673	9,914	1,600	14,963	27,150	67.04%	
T O T A L	703	774,084	725	173	8	21	2	0	0	694	14,469	146,931	102,855	230,069	495,018	63.95%	



2023

National Coverage Statistics Potable Water (Community Based Water Systems)



WESTERN Region	No Of Communities Population		Facilities										Population Group Served			RURAL Coverage	
		Total	BH	HDW	SCPS	STPS	LMS	RHS	GWCL	Below 75	75 - 299	300 - 1999	2000 - 4999	5000 and Over	RURAL Population Served	RURAL Coverage	
AHANTA WEST MUNICIPAL	127	134,503	141	34	0	3	0	0	0	54	2,521	30,367	30,134	22,862	85,938	63.89%	
EFFIA-KWESIMINTSIM MUNICIPAL	6	12,502	4	2	0	0	0	0	0	0	0	400	1,600	0	2,000	16.00%	
ELLEMBELLE	81	124,742	134	23	4	5	0	0	0	0	158	31,351	32,043	31,169	94,721	75.93%	
JOMORO	87	140,650	132	36	0	6	0	0	0	0	1,565	27,055	31,245	36,014	95,879	68.17%	
MPOHOR	41	67,300	34	8	1	3	0	0	0	65	265	2,388	5,800	37,148	45,666	67.85%	
NZEMA EAST MUNICIPAL	76	59,152	75	20	1	0	0	0	0	50	1,267	22,928	3,200	0	27,445	46.40%	
PRETEA-HUNI VALLEY MUNICIPAL	170	137,113	122	44	1	3	0	0	0	186	3,077	35,511	11,722	7,812	58,308	42.53%	
SEKONDI-TAKORADI METRO	5	3,973	0	1	0	0	0	0	0	0	0	200	0	0	200	5.03%	
SHAMA	30	25,776	40	3	0	1	0	0	0	0	1,181	6,487	5,811	0	13,479	52.29%	
TARKWA-NSUAEM MUNICIPAL	93	119,174	106	19	2	1	0	0	0	6	2,024	26,833	8,856	15,751	53,470	44.87%	
WASSA AMENFI EAST MUNICIPAL	99	119,711	124	1	2	4	0	0	0	0	2,122	27,397	26,531	15,199	71,249	59.52%	
WASSA AMENFI WEST MUNICIPAL	59	74,716	58	23	0	2	0	0	0	0	1,800	13,557	4,000	25,486	44,843	60.02%	
WASSA AMENFI CENTRAL	75	73,385	97	19	0	2	0	0	0	25	2,872	18,028	14,915	5,456	41,296	56.27%	
WASSA EAST	176	99,258	76	46	1	1	0	0	0	117	2,718	21,792	13,753	1,200	39,580	39.88%	
T O T A L	1,125	1,191,955	1,143	279	12	31	0	0	0	503	21,570	264,294	189,610	198,097	674,074	56.55%	